

RESIDENCE 1    3 Bedrooms | 2 Bathrooms | 2 Car Garage | approx. 1,342 sq. ft.



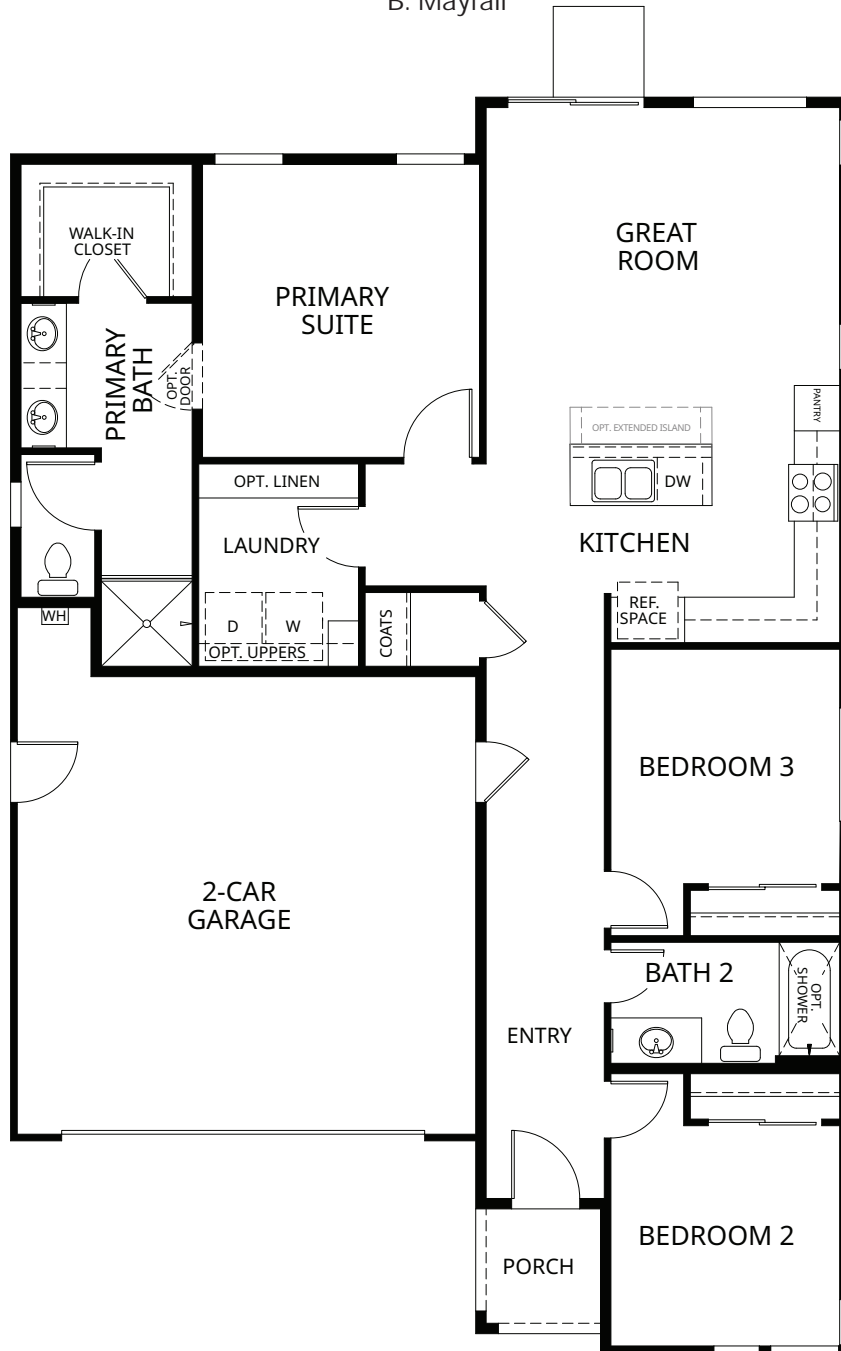
A: Skyline



B: Mayfair



C: Park Manor



RESIDENCE 2    3 Bedrooms | 2.5 Bathrooms | 2 Car Garage | approx. 1,651 sq. ft.



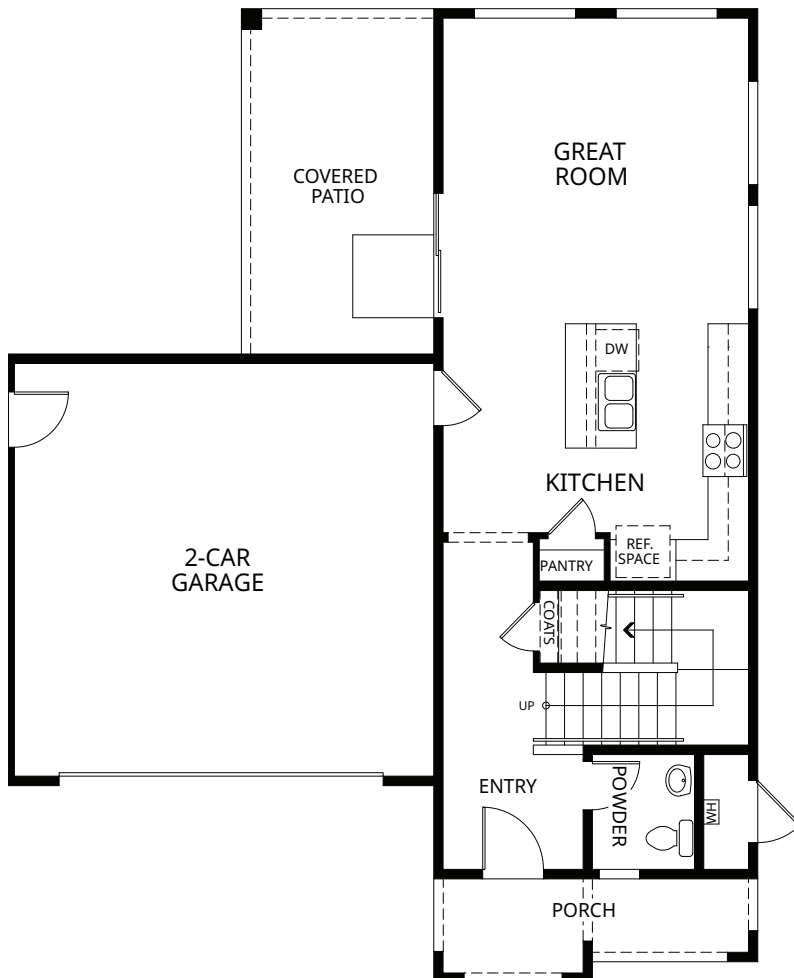
A: Skyline



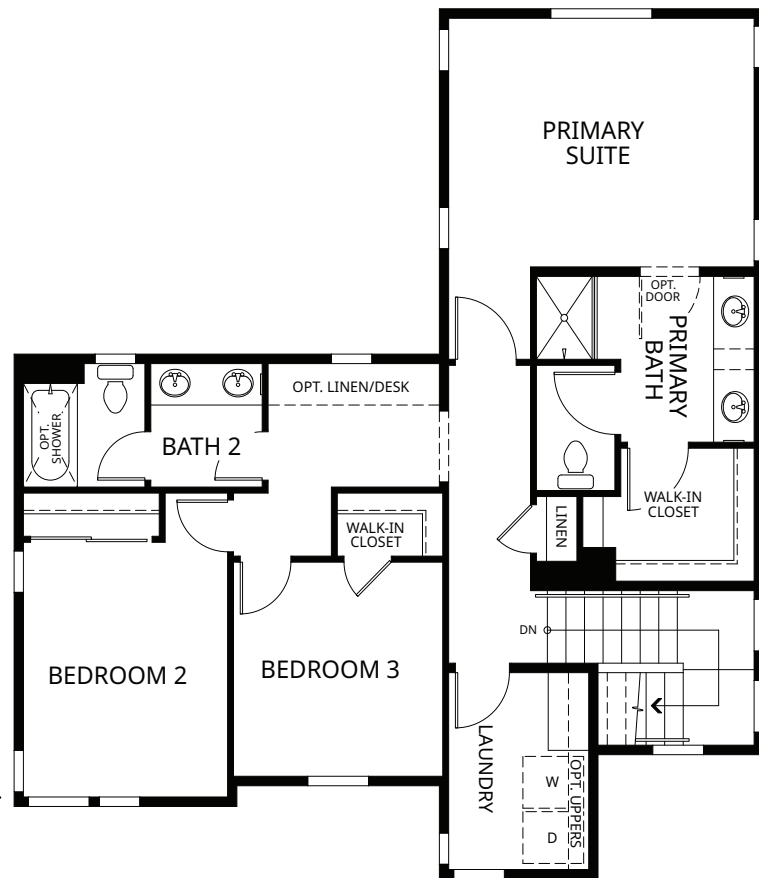
B: Mayfair



C: Park Manor



FIRST FLOOR



SECOND FLOOR

RESIDENCE 3    3 Bedrooms | 3 Bathrooms | 2 Car Garage | approx. 1,831 sq. ft.



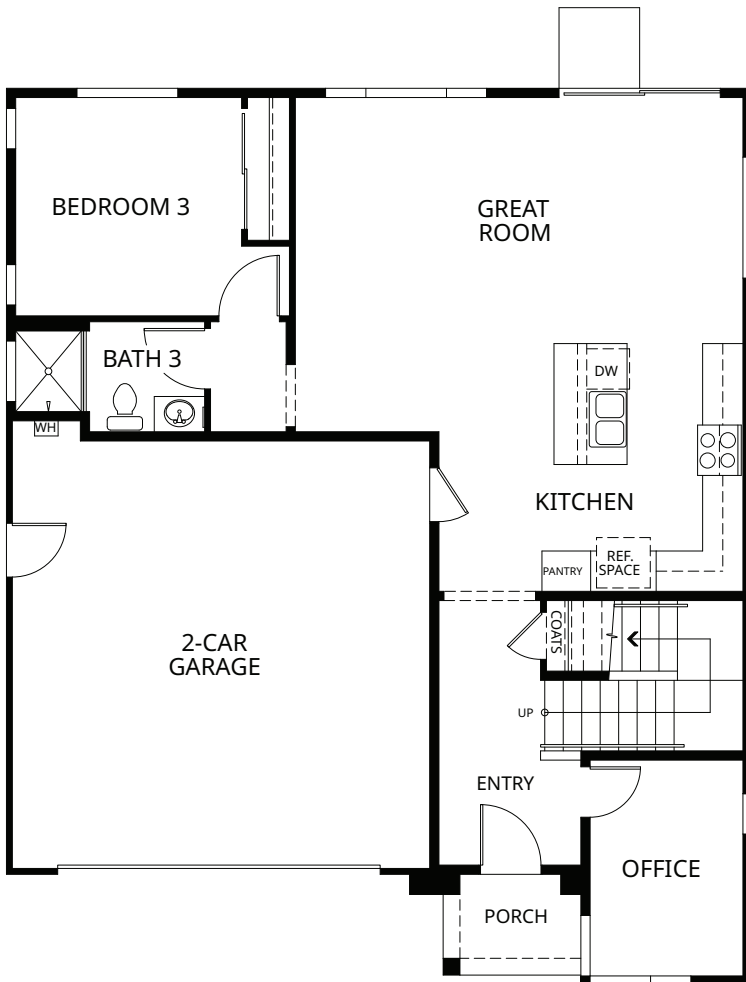
A: Skyline



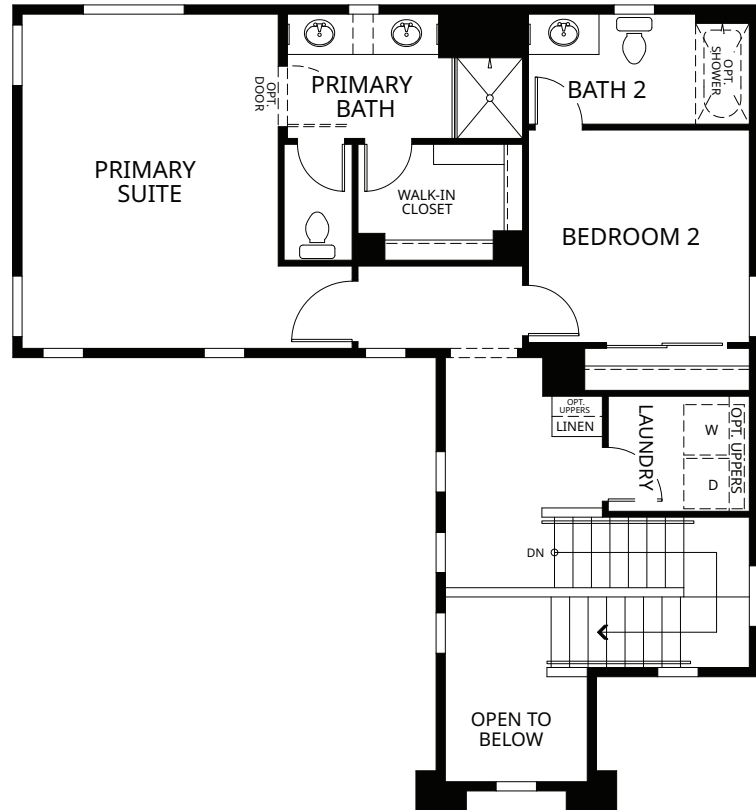
B: Mayfair



C: Park Manor



FIRST FLOOR



SECOND FLOOR

RESIDENCE 4    3 - 4 Bedrooms | 2.5 - 3 Bathrooms | 2 Car Garage | approx. 2,221 sq. ft.



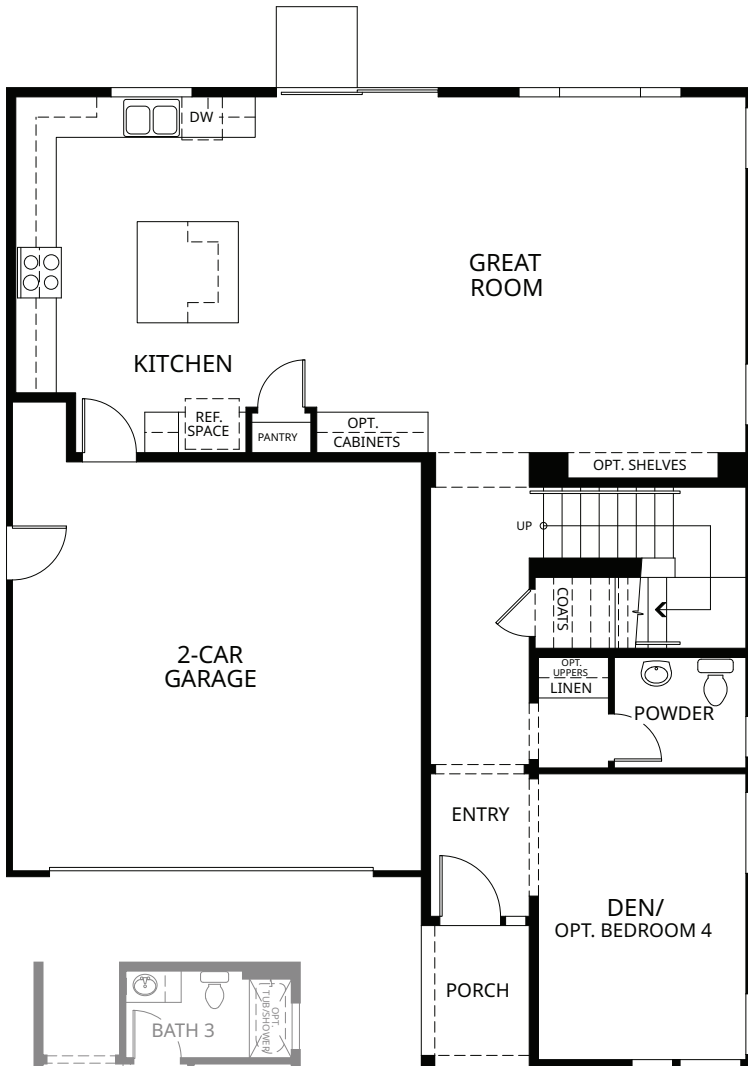
A: Skyline



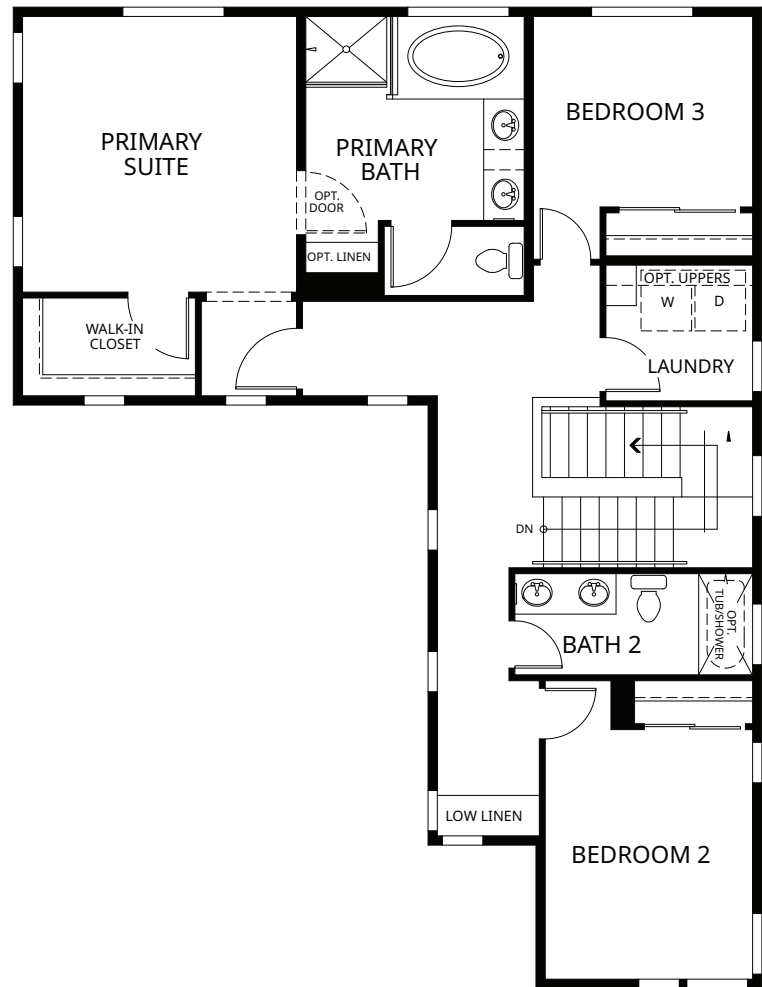
B: Mayfair



C: Park Manor



FIRST FLOOR



SECOND FLOOR



OPTIONAL  
BEDROOM 4



**FIRST FLOOR**

**GREAT ROOM**  
OPT. DEN

**KITCHEN**  
DW  
REF. SPACE  
PANTRY

**2-CAR GARAGE**  
WH

**POWDER**  
OPT. LIPPERS  
DROF. ZONE

**OFFICE**  
OPT. DESK

**ENTRY**  
OPT. DOOR

**PORCH**

**COATS**

**UP**

This floor plan shows a large central 'DEN' area. To the right of the den is a 'SLEEPING PORCH' with a 'BOOKSHELF' on the left wall. A 'GARAGE' is located at the bottom of the plan, with an 'OPTIONAL DEN' area below it. The plan includes a front porch, a side porch, and a rear porch. A 'W.C.' (water closet) is located near the front porch. The overall layout is rectangular with a central living area and a sleeping porch on the right side.

SECOND FLOOR

WALK-IN CLOSET

PRIMARY BATH

OPT. LINEN

OPT. DOOR

PRIMARY SUITE

WALK-IN CLOSET

BEDROOM 4

WALK-IN CLOSET

LAUNDRY

OPT. UP

OPT. DOWN

SINK

LOFT

DN

BEDROOM 3

WALK-IN CLOSET

BATH 2

BEDROOM 2

## SECOND FLOOR

Floor plan of the second floor. The layout includes a large bedroom labeled 'BEDROOM 5' with a bay window. An 'ENTRY' area connects the bedroom to a 'PORCH' and a 'BATH 3'. The bathroom contains a toilet, a sink, and a bathtub. A closet is located near the bathroom. The plan also shows a staircase and a door leading to another room.

### OPTIONAL BEDROOM 5

The second floor plan includes Bath 3, a coat closet (COATS.), and an Office/Optional Bedroom 5. The Office/Optional Bedroom 5 area includes an optional desk (OPT. DESK).

### OPTIONAL BATH 3



## Standard Features List

### CERTAINLY CRESLEIGH

- Engineered roof truss system
- High quality building materials & workmanship that adds lasting value
- Special measures to reduce water vapor transmission through the concrete slab
- 3 hose bib locations: front, side, and rear of home
- Cresleigh Connected Home – Smart Home Control Module with Smart Device Control & Smart Device Application
- Full side and rear yard fencing with poured service walk
- Separate electrical breaker boxes with interior garage access

### COMFORTABLE BEDROOMS & LUXURIOUS BATHS

- Spacious walk-in closet(s) in Primary Suite
- Ceiling light in all bedrooms
- Ceiling Fan pre-wire in Primary Suite
- Bedside USB Charging Stations in Primary Suite
- Stylish engineered stone shower surrounds & vanity tops with 4" backsplash
- Drop-In Soaking Tub in Primary Suite (per plan)
- Oversized shower with engineered stone surround & glass enclosure in Primary Suite
- Auto-humidistat and vented exhaust fan in Primary Suite
- Dual vanity oval undermount sinks in full bathrooms (per plan)
- Stylish chrome bath accessories & fixtures in all bathrooms
- High quality maple cabinetry with concealed hinges

### GRACIOUS LIVING AREAS

- Stylish 17" x 17" ceramic tile at Entry, Kitchen/Nook, Bathrooms, & Laundry
- Drop Zone (per plan)
- Abundant Linen Storage
- Graceful, rounded interior wall corners
- Upgraded stylish door casings & baseboards
- Plush wall-to-wall carpeting in living areas
- Pre-wired for ceiling fan in Great Room
- CAT6 pre-wire Great Room, and Office (per plan)

### CONNECTED SMART HOME

- Home Automation Hub with smart device control application
- Honeywell Smart Thermostat
- Kwikset® entry door hardware with digital lock in oil rubbed bronze
- Google Nest Hub™ and Google Home Mini™
- Video Doorbell with Wi-Fi remote capabilities
- Ubiquiti® Wi-Fi extender – allowing for maximum WiFi coverage
- Smart Lighting Controls
- Remote Wi-Fi enabled garage door opener
- USB Charging Stations in Primary Suite and Drop Zone (per plan)

### ENERGY SAVINGS FEATURES & INVESTMENT PROTECTION

- Solar Energy Package with Owned Solar Panels
- Energy efficient LED recessed ceiling lights throughout
- 220 volt dedicated outlet pre-wire in garage
- Smart Programmable Thermostat
- Premium low VOC acrylic paint
- Drought tolerant landscaping with Wi-Fi programmable irrigation control and rain sensor
- Gas & Electric dryer hookups in Laundry Room
- Energy saving dual zone control (for 2-story plans)
- Tankless water heater
- High Performance Attics & R-19 insulation in exterior walls
- Energy efficient LED recessed ceiling can lights with dimmers in select rooms
- Long lasting concrete tile roofs
- Heavy-duty foam core insulated garage doors
- Smoke & Carbon Monoxide detectors
- Fire sprinkler system
- 10-Year Structural Warranty

### GOURMET KITCHENS

- Center work island including eat-in bar
- Walk-In Pantry with abundant storage (per plan)
- Stainless Steel Frigidaire® appliances
- Your choice of designer selected Quartz or Granite Countertops with 6" backsplash
- Stainless Steel under mount kitchen sink with pull-out kitchen faucet with sprayer
- High quality maple cabinetry with concealed hinges