



FINAL OPPORTUNITY AT

# CRESLEIGH PEAKS



**\$620,000**



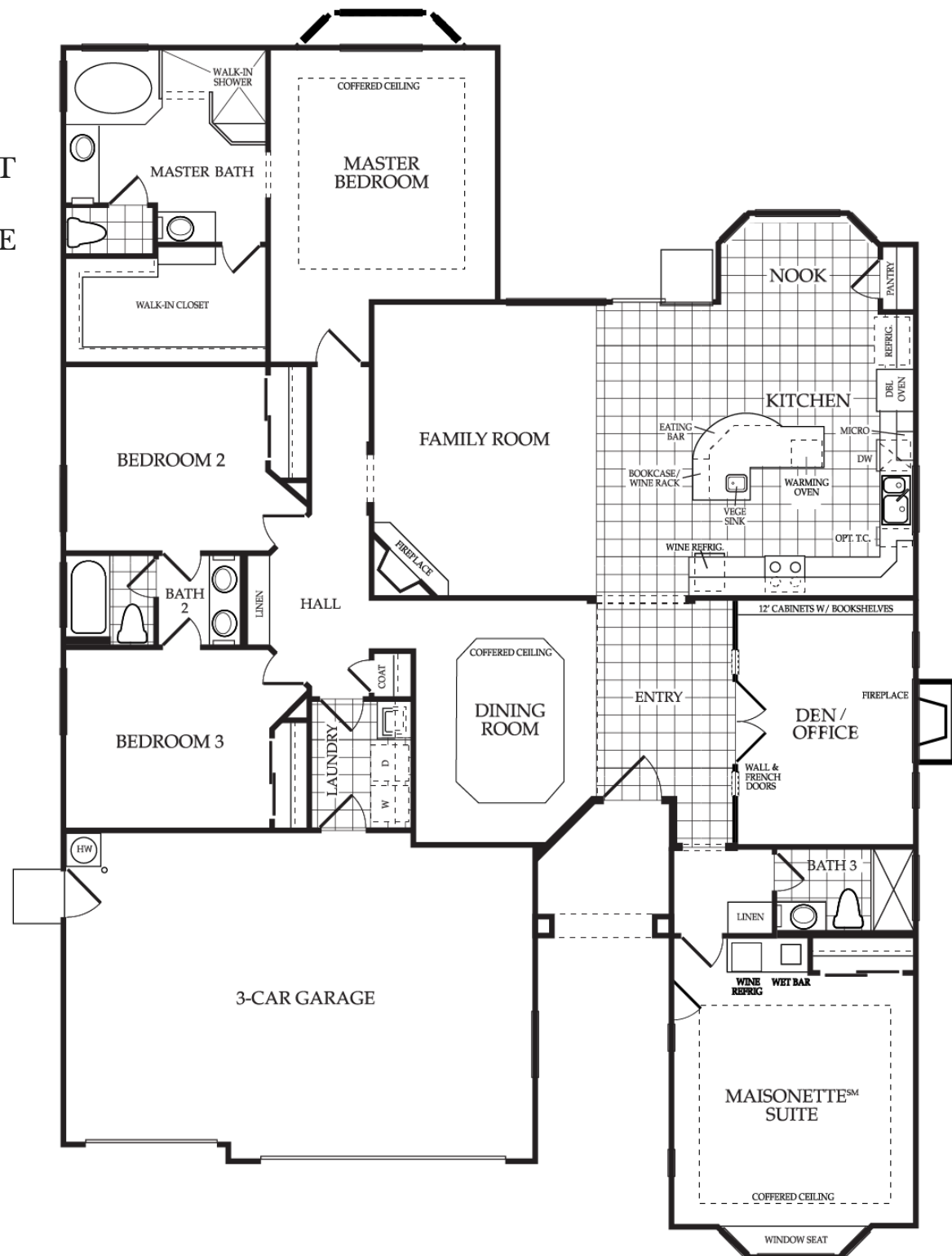
Our gorgeous, fully furnished model home is for sale. This is the last chance to purchase a Cresleigh Home in our *Signature Collection* and you won't be disappointed walking this expansive 2,535 square foot home. The Pikes plan features four bedrooms, including a large maisonette bedroom, three bathrooms, formal dining room, private den and more!

Don't pass up the opportunity to live in your dream Cresleigh home.

Cresleigh Peaks | 2737 Satori Way Yuba City, CA 95993 | (530) 790-7900 | MLS #201800325

# THE PIKES

SINGLE-STORY, 2,535 SQUARE FEET  
FOUR BEDROOMS, THREE  
BATHROOMS, THREE-CAR GARAGE



Cresleigh Peaks | 2737 Satori Way Yuba City, CA 95993 | (530) 790-7900 | MLS #201800325