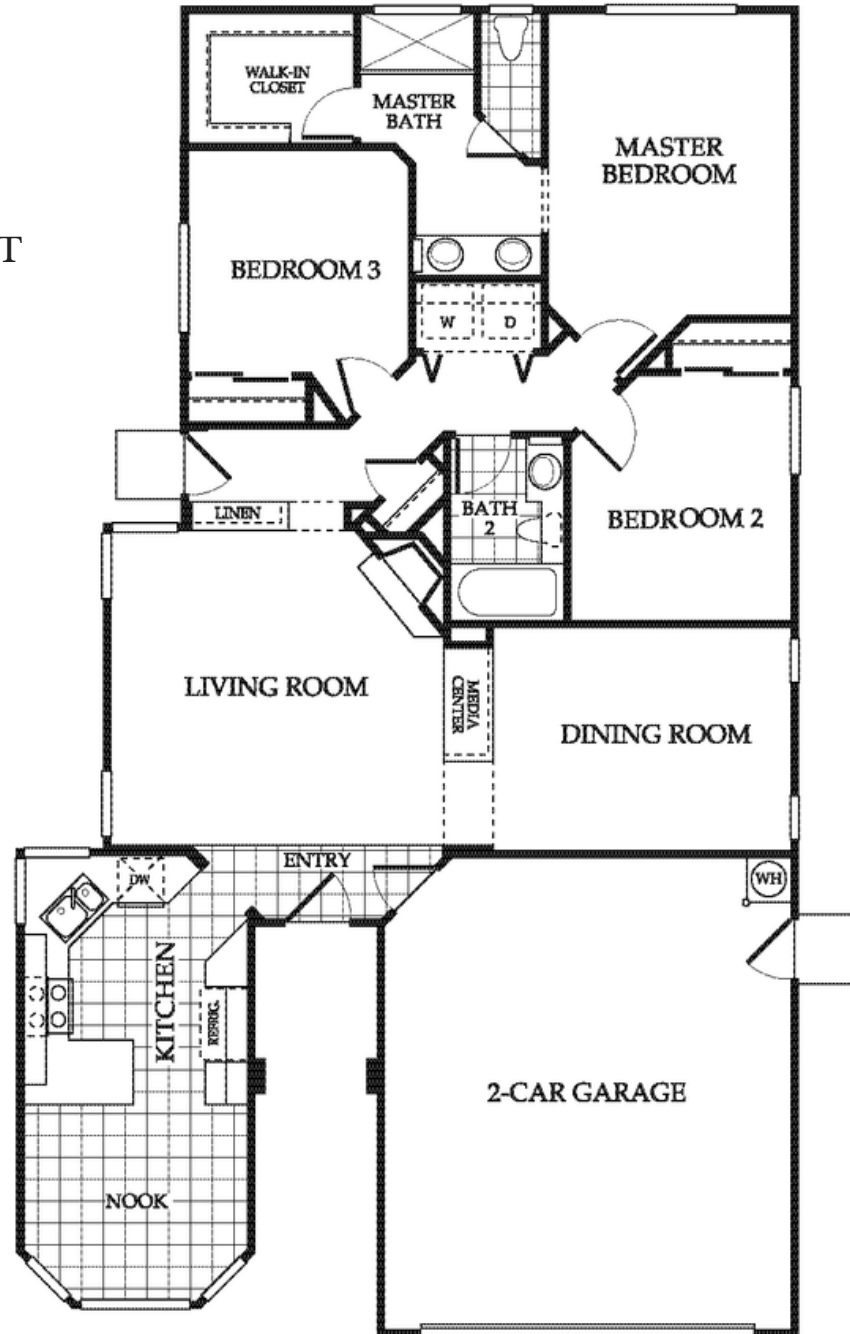


CRESLEIGH PEAKS

Homesite 76 THE SHASTINA

SINGLE-STORY, 1,377 SQUARE FEET
THREE BEDROOMS, TWO
BATHROOMS, TWO-CAR GARAGE



Cresleigh Homes reserves the right to change plans, specifications, features and prices without notice. Renderings and floorplans are artist's conceptions and are not to scale. The Advantage Group BRE #01187063

Cresleigh Peaks | 2737 Satori Way Yuba City, CA 95993 | (530) 790-7900 | emma@taghomes.com