

**RESIDENCE 1** | 3 Bedrooms | 2.5 Bathrooms | 2 Car Garage | approx. 2,054 sq. ft.



Elevation A



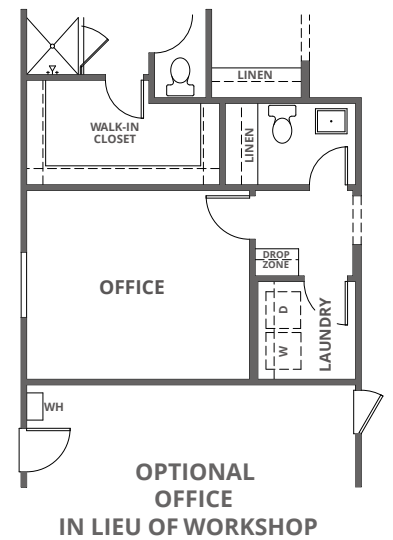
Elevation B



Elevation C



**FIRST FLOOR**



**RESIDENCE 2** 3-4 Bedrooms | 3 Bathrooms | 3 Car Garage | approx. 2,427 sq. ft.



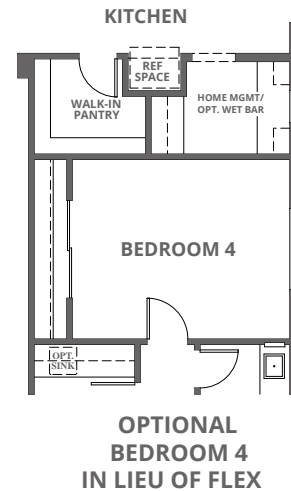
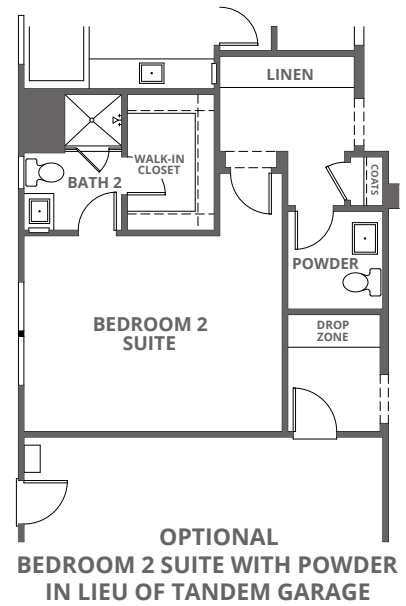
Elevation A



Elevation B



Elevation C



**RESIDENCE 3** 4 Bedrooms | 3.5 Bathrooms | 3 Car Garage | approx. 2,757 sq. ft.



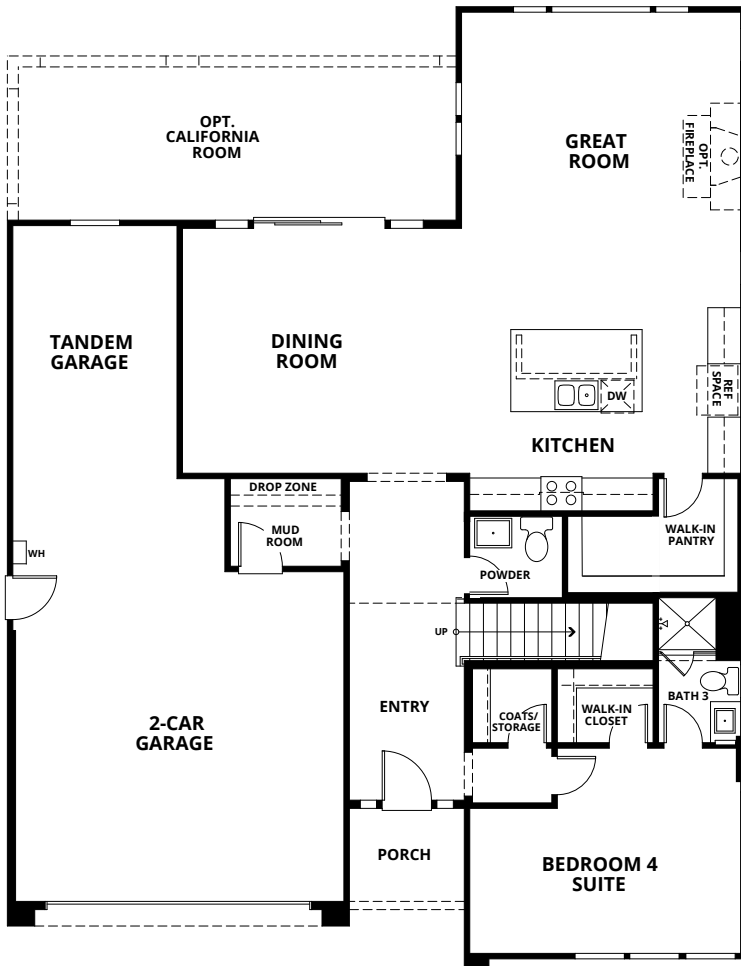
Elevation A



Elevation C



Elevation D



**FIRST FLOOR**



**SECOND FLOOR**

**RESIDENCE 4** 4 - 5 Bedrooms | 3.5 Bathrooms | 3 Car Garage | approx. 3,500 sq. ft.



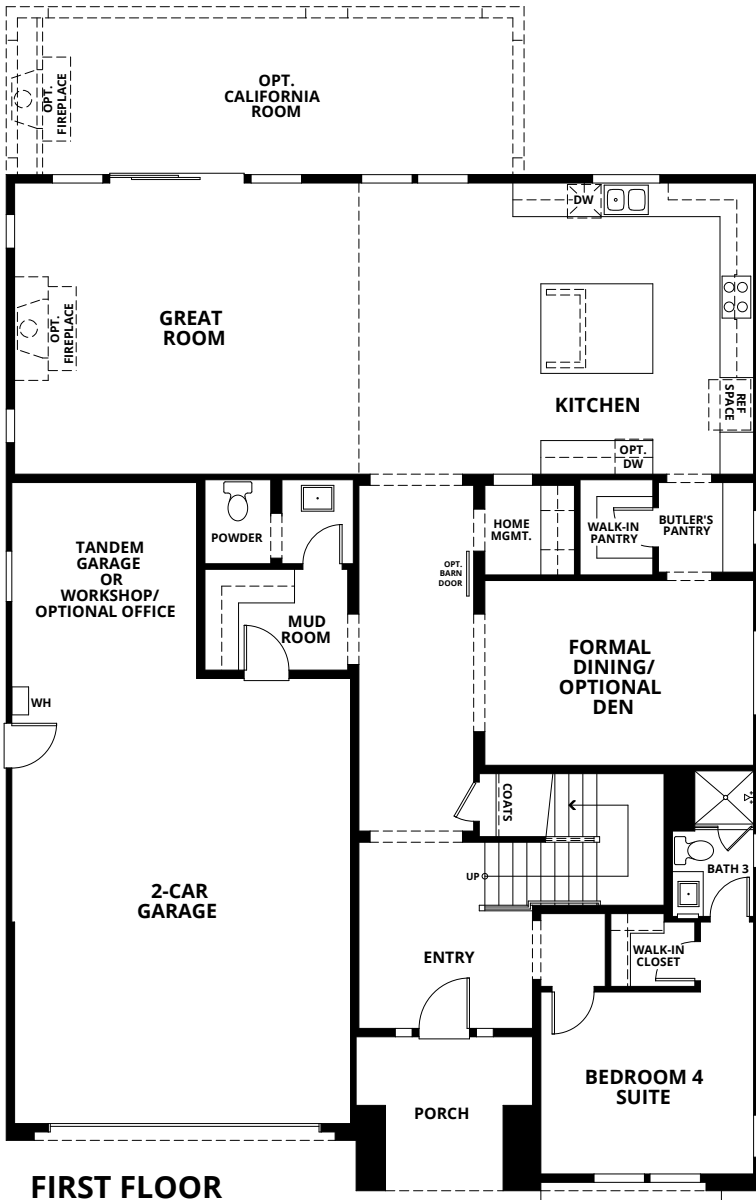
Elevation B



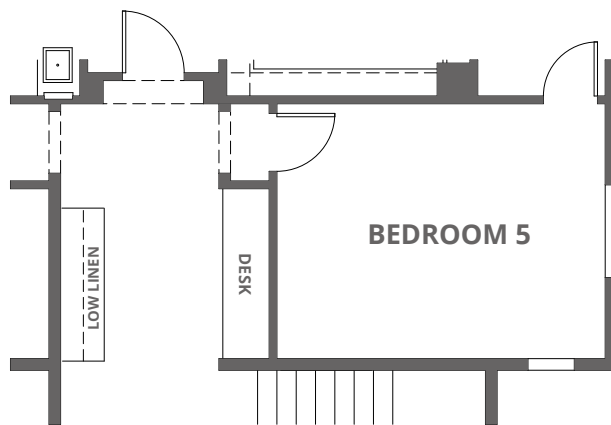
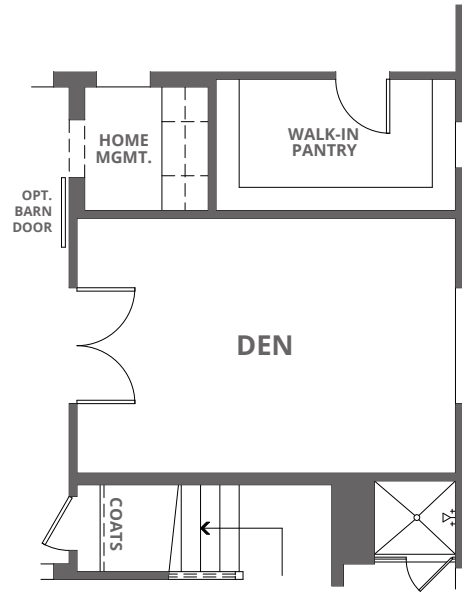
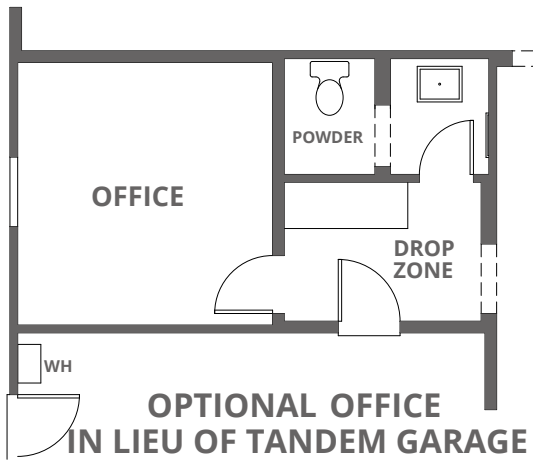
Elevation C



Elevation D



**RESIDENCE 4 OPTIONS** 4 - 5 Bedrooms | 3.5 Bathrooms | 3 Car Garage | approx. 3,500 sq. ft.



## Standard Features List

### Exteriors

- Designer selected exterior color palette
- Long lasting concrete tile roofs
- Elegant 8' raised panel entry door
- Kwikset® entry door hardware in oil rubbed bronze
- 7' high garage door with belt drive opener
- Premium NO VOC acrylic paint
- Inviting covered entryway (per plan)
- Front yard landscaping with programmable irrigation
- Full side and rear yard fencing

### Gourmet Kitchens

- Center work island including eat in bar
- Walk-In Pantry with abundant storage
- Designer selected Quartz or Granite Countertops
- Stainless Steel under mount kitchen sink
- Designer pull-out kitchen faucet with sprayer
- High quality maple cabinetry with concealed hinges
- Stainless Steel Frigidaire appliances

### Comfortable Master Suites

- Stylish engineered stone vanity tops with 4" backsplash
- Free Standing Soaking tub
- Oversized shower with engineered stone surround & glass enclosure
- Dual vanity square top-mount sinks
- Upgraded chrome bath accessories / fixtures
- High quality maple cabinetry with concealed hinges
- USB Changing Stations in Master Suite
- Pre-wired for telephone with Category 6 wiring in master bedroom

### Connected Home Package

- Google Nest Hub™ and Google Home Mini™
- Home Automation Hub with access to smart device application
- *Honeywell* Smart Thermostat
- Video Doorbell
- Kwikset® digital touch screen deadbolt lock
- Ubiquiti® Wi-Fi extenders throughout home – allowing for maximum coverage
- Smart Lighting Controls

### Gracious Living Areas

- Elegant 18" x 18" hand set ceramic tile at entry, kitchen/nook, bathrooms, & laundry
- Graceful rounded interior wall corners
- Upgraded stylish door casings & boards
- Energy efficient LED Recessed ceiling can lights throughout
- USB Charging Stations in Master Suite and Drop Zone (per plan)
- Plush wall-to-wall carpeting in living areas
- Drop Zone
- Ceiling light in all bedrooms
- Pre-wired for ceiling fan in master bedroom and great room
- Pre-wired for cable television in master bedroom, great room, and loft (per plan)
- Abundant linen storage
- Spacious and elegant showers in secondary bathrooms
- Stylish engineered stone vanity tops with 4" backsplash in secondary bathrooms
- Stylish engineered stone shower surrounds in secondary bathrooms
- Square topmount sinks in secondary bathrooms
- Laundry Room includes both gas & electric dryer connections

### Investment Protection

- All-Ready Connected Home – Smart Home Control Module with Smart Device Application
- Structured Wiring
- High quality building materials & workmanship that adds lasting value
- Electric Vehicle charging pre-plumb in Garage
- Frame treated with Bora Care for subterranean termite control
- Special measures to reduce water vapor transmission through the concrete slab
- Heavy-duty foam core insulated garage doors
- Engineered roof truss system and steel reinforced foundations
- Smoke & Carbon Monoxide detectors
- Enhanced Filters on all Air Returns †

### Energy Saving Features

- Fully-Owned Solar Energy System (size varies per plan)
- Energy saving dual zone HVAC control (for 2 story plans)
- Heat Recovery Ventilator System †
- Smart Thermostat
- Tankless water heater
- High Performance Attic
- Energy efficient LED recessed ceiling can lights
- Rocker switches throughout, dimmers in select rooms
- Increased insulation throughout for higher efficiency †