

RESIDENCE 1 3 - 4 Bedrooms | 2 Bathrooms | 2 Car Garage | approx. 2,293 sq. ft.



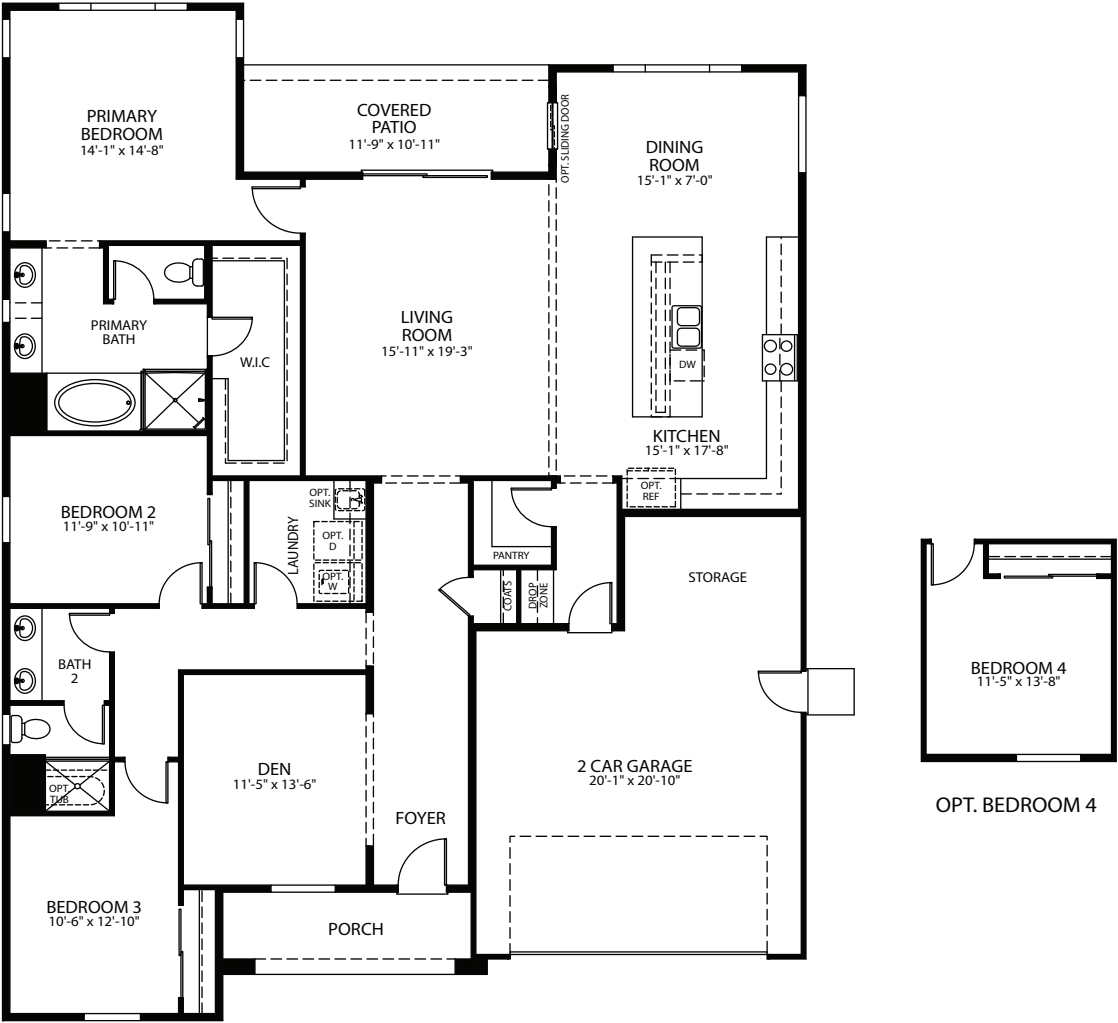
Elevation A



Elevation B



Elevation C



RESIDENCE 2 3 - 4 Bedrooms | 3 Bathrooms | 3 Car Garage | approx. 2,627sq. ft.



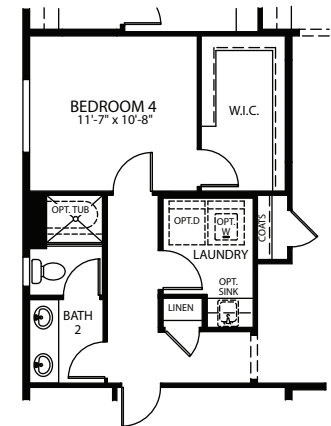
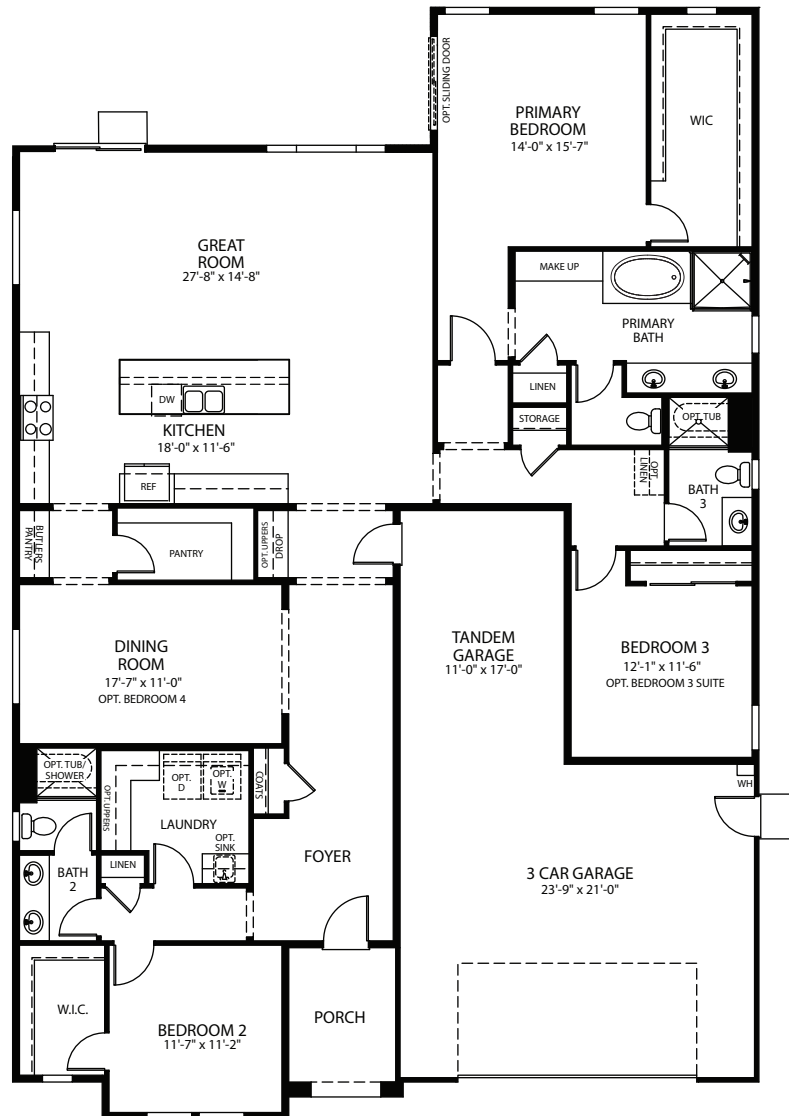
Elevation A



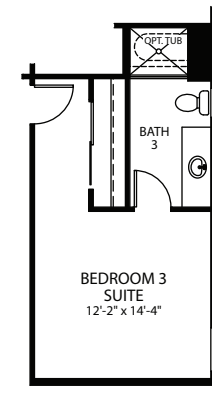
Elevation B



Elevation C



OPT. BEDROOM 4



OPT. BEDROOM 3 SUITE

RESIDENCE 3 4 - 5 Bedrooms | 2.5 - 3.5 Bathrooms | 3 Car Garage | approx. 2,827 sq. ft.



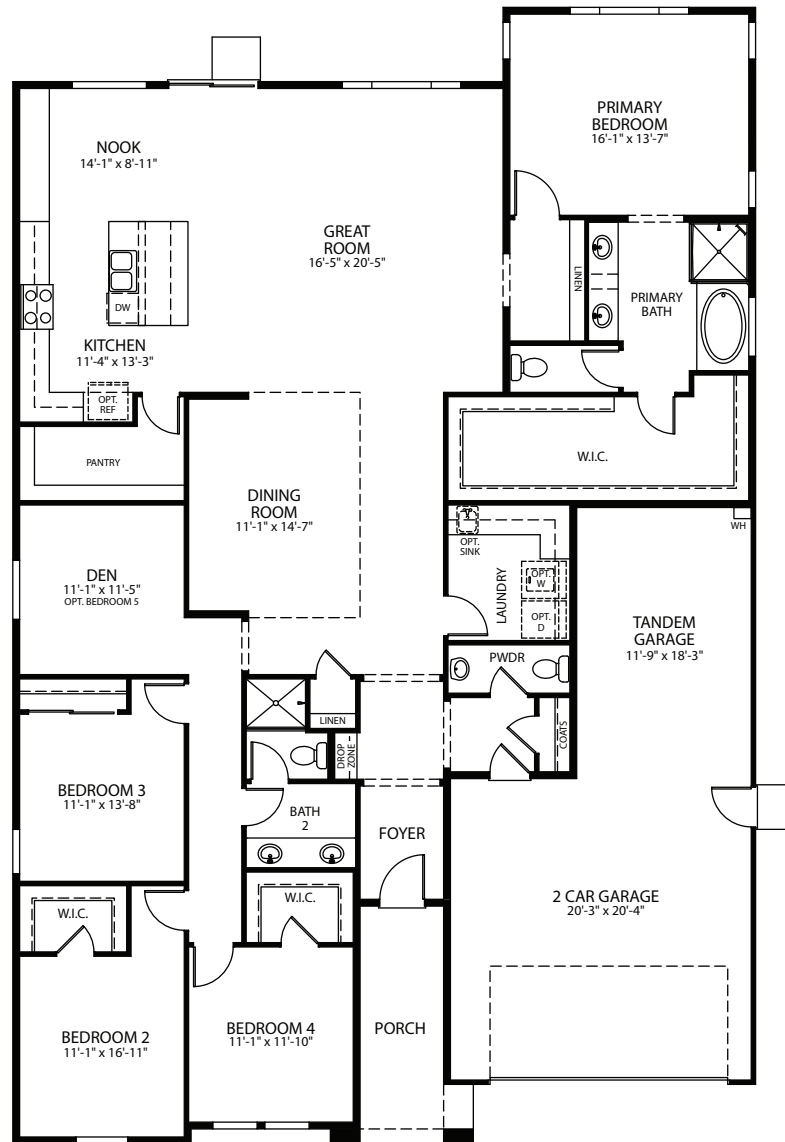
Elevation A



Elevation B



Elevation C



OPT. BEDROOM 5 SUITE

RESIDENCE 4 | 3 - 5 Bedrooms | 3.5 Bathrooms | 3 Car Garage | approx. 3,489 sq. ft.



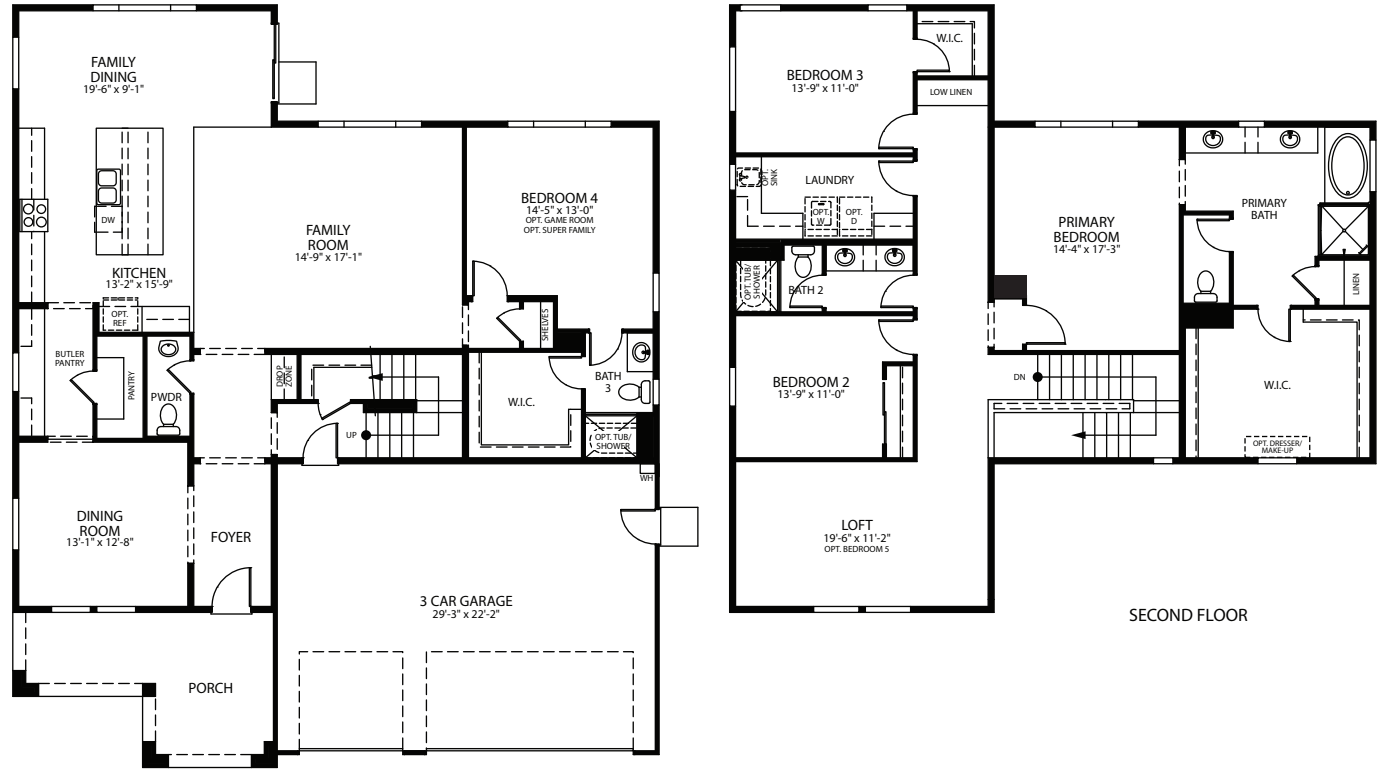
Elevation A



Elevation B

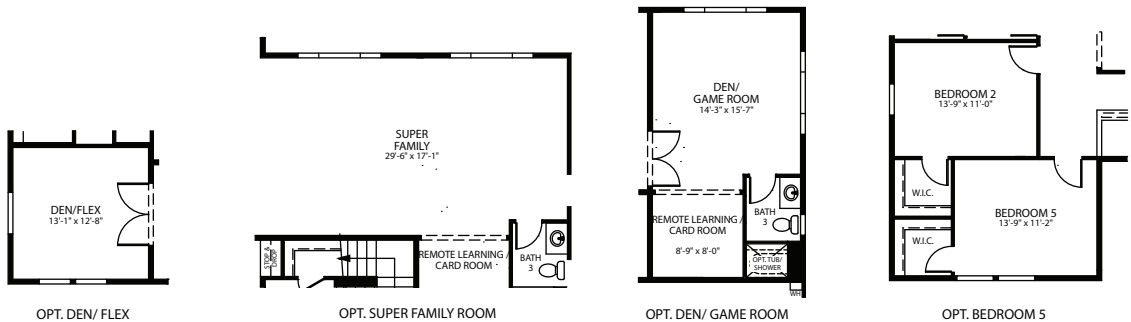


Elevation C



FIRST FLOOR

SECOND FLOOR



OPT. DEN/ FLEX

OPT. SUPER FAMILY ROOM

OPT. DEN/ GAME ROOM

OPT. BEDROOM 5

Standard Features List

Exteriors

- Designer selected exterior color palettes
- Long lasting concrete tile roofs
- Elegant 8' raised panel entry door
- Kwikset® entry door hardware with digital lock in oil rubbed bronze
- 8' high garage door with belt drive opener
- Premium low VOC acrylic paint
- Front yard landscaping with programmable irrigation
- Full side and rear yard fencing with poured service walk

Comfortable Owners' Suites

- Stylish engineered stone vanity tops with 4" backsplash
- Drop -In Soaking Tub
- Oversized shower with engineered stone surround & glass enclosure sinks
- Dual vanity oval undermount
- Upgraded chrome bath accessories / fixtures
- High quality maple cabinetry with concealed hinges
- USB Charging Stations in Primary Suite
- Pre -wired for telephone with Category 6 wiring in primary bedroom

Gourmet Kitchens

- Center work island including eat in bar
- Walk -In Pantry with abundant storage
- Designer selected Quartz or Granite Countertops
- Stainless Steel under mount kitchen sink
- Designer pull -out kitchen faucet with sprayer
- High quality maple cabinetry with concealed hinges
- Stainless Steel Frigidaire® appliances

Connected Smart Home Package

- Google Nest Hub™ and Google Home Mini™
- Home Automation Hub with access to smart device application
- Honeywell Smart Thermostat
- Video Doorbell
- Kwikset® digital touch screen deadbolt lock
- Ubiquiti® Wi-Fi extender – allowing for maximum WiFi coverage
- Smart Lighting Controls

Gracious Living Areas

- Elegant 17" x 17" hand set ceramic tile at entry, kitchen/nook, bathrooms, & laundry
- Graceful rounded interior wall corners
- Upgraded stylish door casings & boards
- Energy efficient LED Recessed ceiling can lights throughout
- USB Charging Stations in Primary Suite and Drop Zone (per plan)
- Plush wall -to-wall carpeting in living areas
- Drop Zone
- Ceiling light in all bedrooms
- Pre -wired for ceiling fan in Primary bedroom and great room
- Pre -wired for cable television in Primary bedroom, great room, and loft (per plan)
- Abundant linen storage
- Spacious and elegant showers in secondary bathrooms
- Stylish engineered stone vanity tops with 4" backsplash in secondary bathrooms
- Stylish engineered stone shower surrounds in secondary bathrooms
- Oval undermount sinks in secondary bathrooms
- Laundry Room includes both gas & electric dryer connections

Investment Protection

- All-Ready Connected Home – Smart Home Control Module with Smart Device Application
- Structured Wiring
- High quality building materials & workmanship that adds lasting value
- Frame treated with Bora Care for subterranean termite control
- Special measures to reduce water vapor transmission through the concrete slab
- Heavy -duty foam core insulated garage doors
- Engineered roof truss system and steel reinforced foundations
- Smoke & Carbon Monoxide detectors

Energy Saving Features

- Solar Energy Package
- Energy saving dual zone control (for 2 -story plans)
- Smart Programmable Thermostat
- Tankless water heater
- R-21+ Insulation Throughout
- Energy efficient LED recessed ceiling can lights
- Rocker switches throughout, dimmers in select rooms