

RESIDENCE 1    3 - 4 Bedrooms | 2 Bathrooms | 2 Car Garage | approx. 2,293 sq. ft.



A: Contemporary Prairie



B: California Craftsman



C: Modern Farmhouse



RESIDENCE 2    3 - 4 Bedrooms | 3 Bathrooms | 3 Car Garage | approx. 2,627 sq. ft.



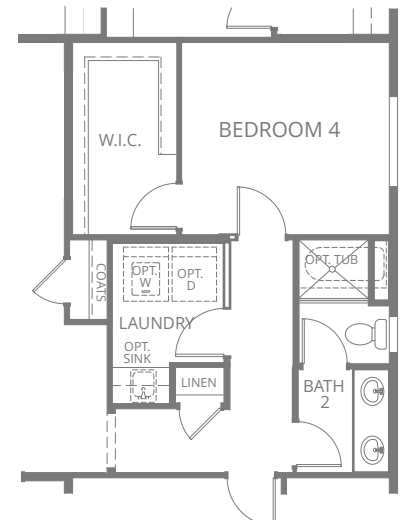
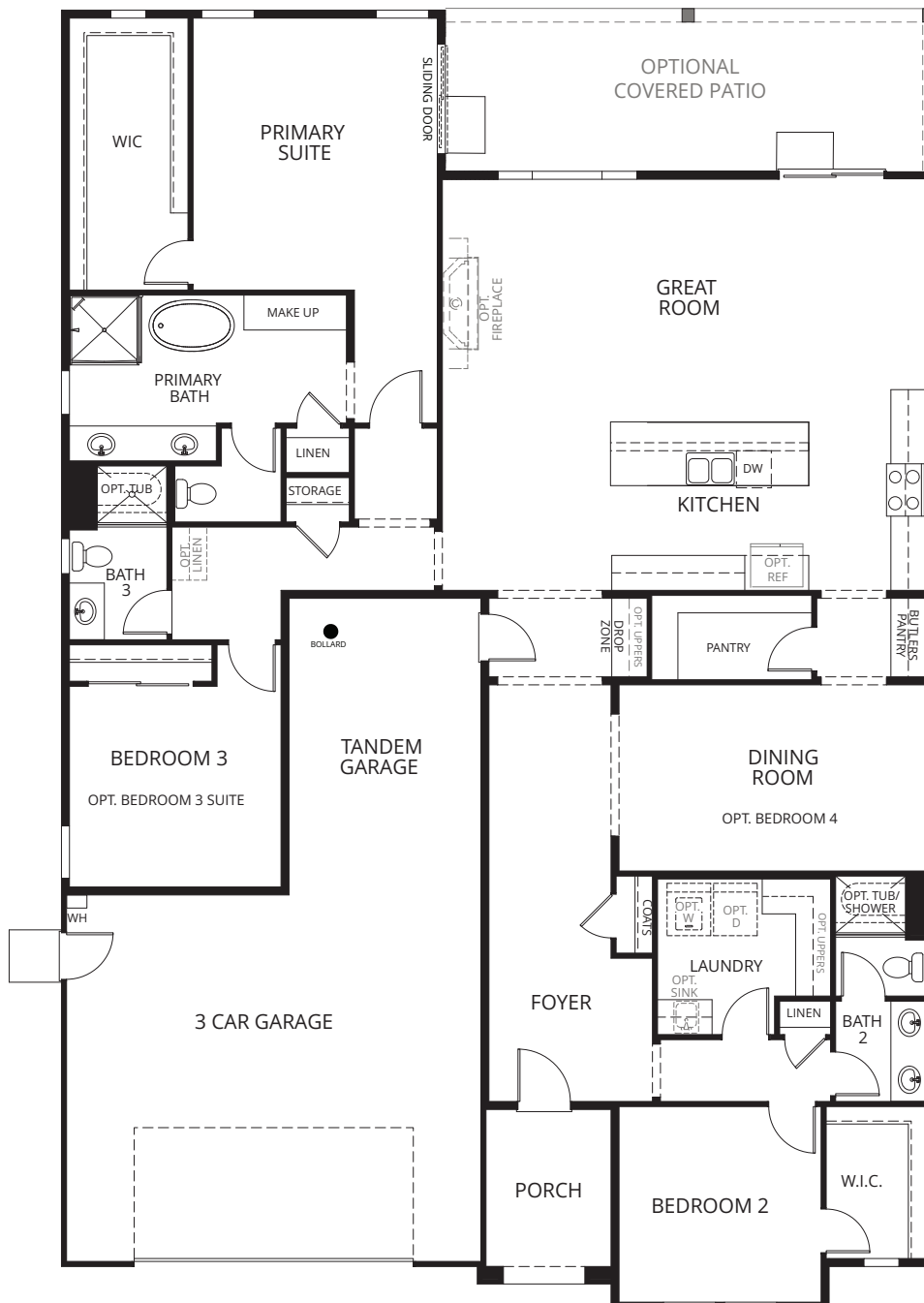
A: Contemporary Prairie



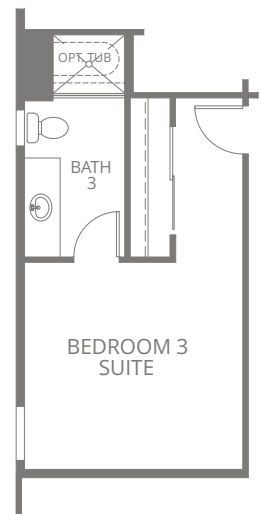
B: California Craftsman



C: Modern Farmhouse



OPT. BEDROOM 4



OPT. BEDROOM 3 SUITE

RESIDENCE 3    4 Bedrooms | 2.5 Bathrooms | 3 Car Garage | approx. 2,827 sq. ft.



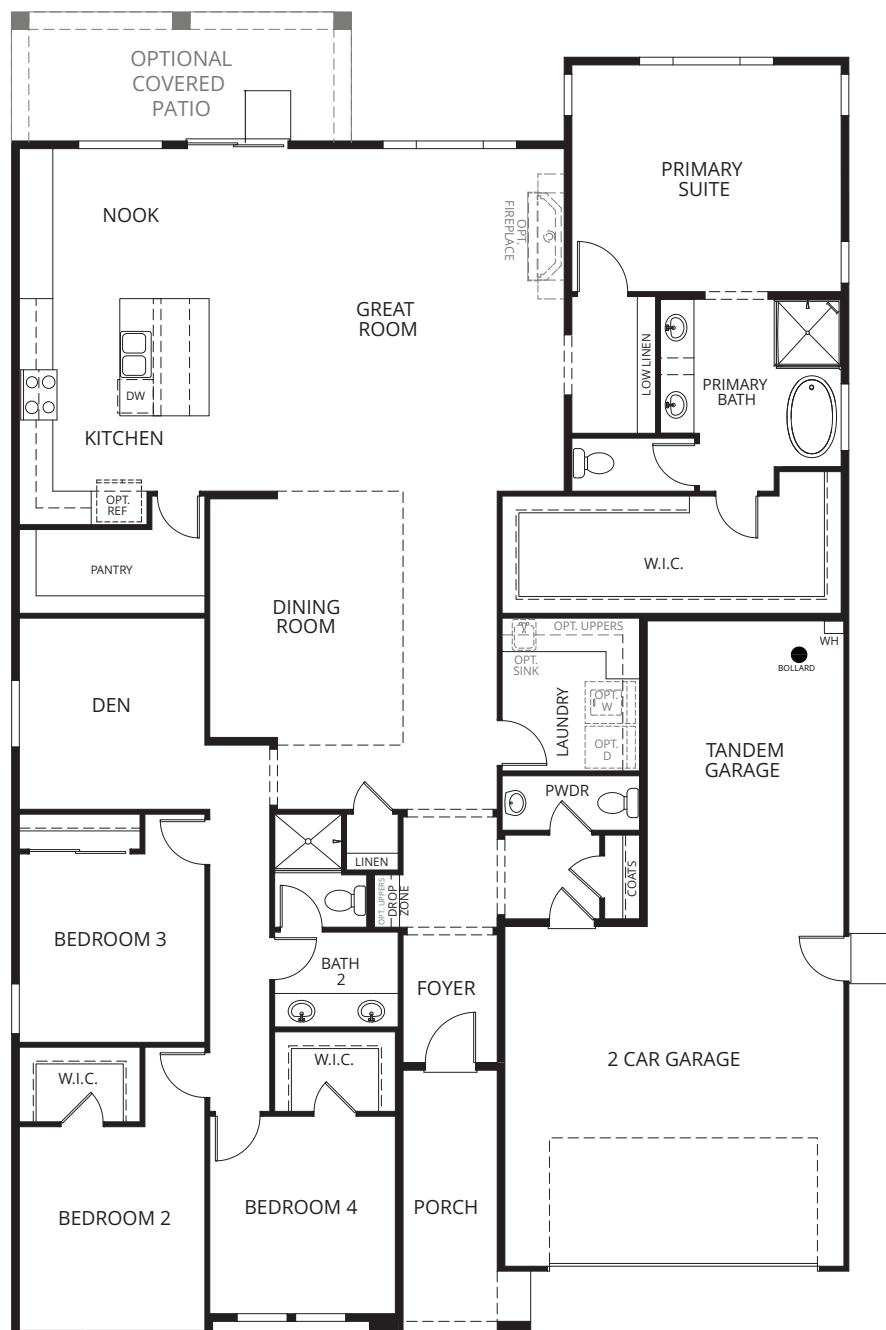
A: Contemporary Prairie



B: California Craftsman



C: Modern Farmhouse



RESIDENCE 4    3 - 5 Bedrooms | 3.5 Bathrooms | 3 Car Garage | approx. 3,377 sq. ft.



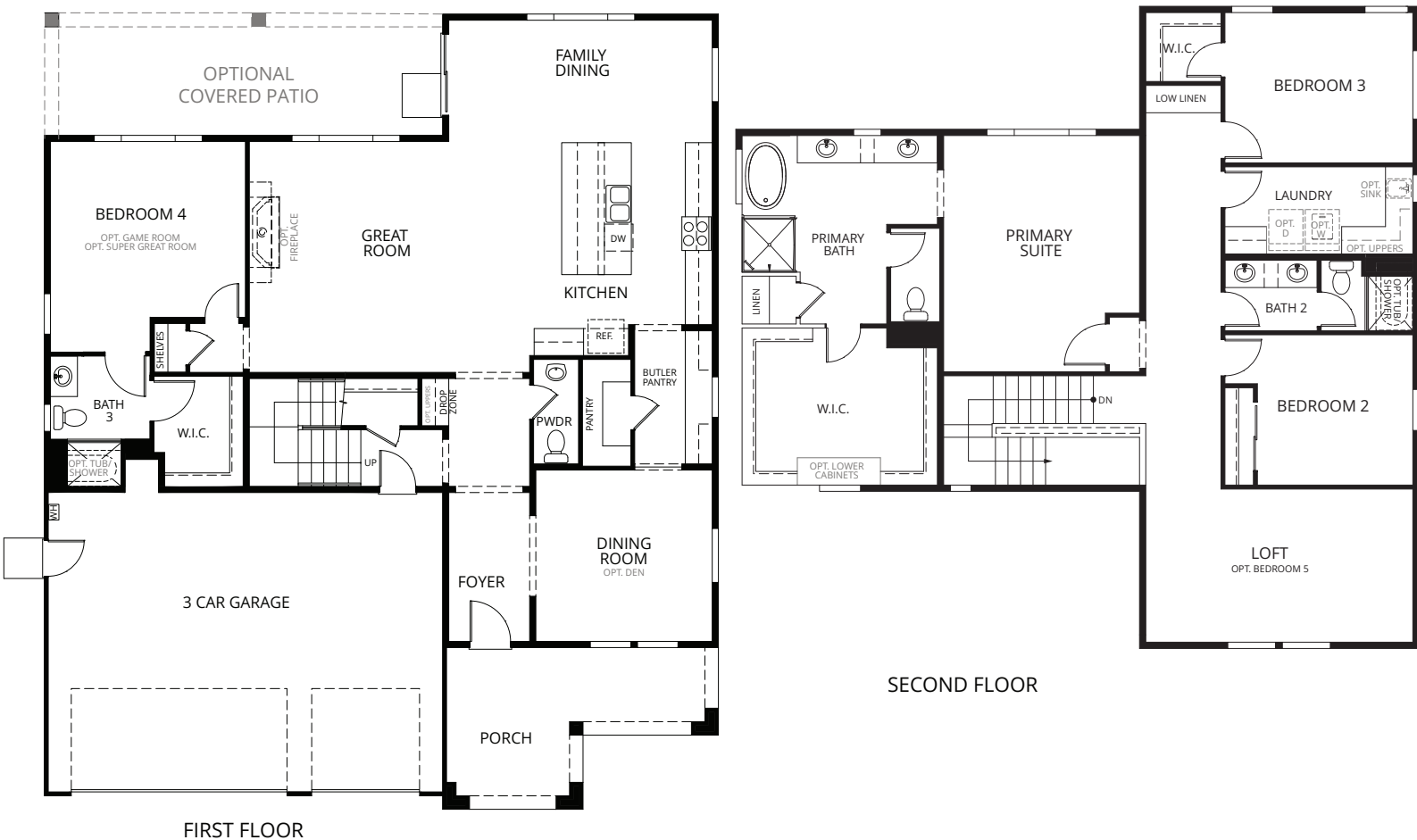
A: Contemporary Prairie



B: California Craftsman

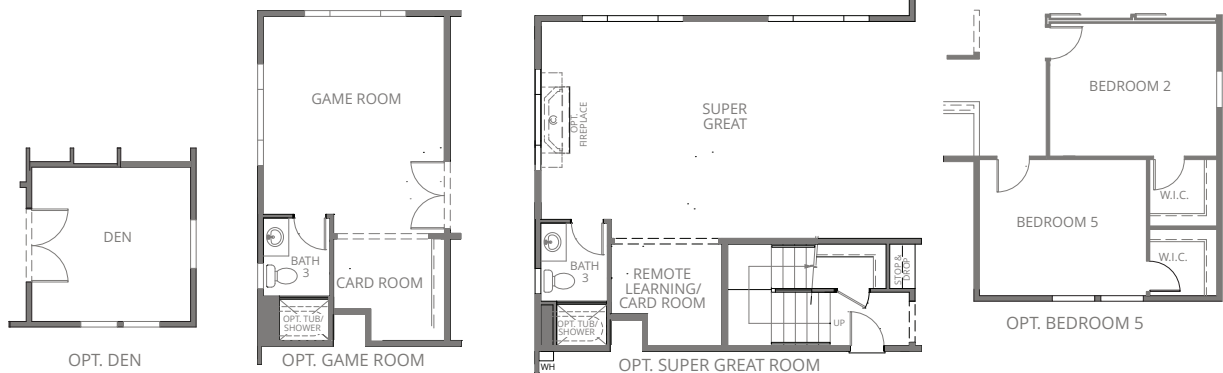


C: Modern Farmhouse



FIRST FLOOR

SECOND FLOOR



RESIDENCE 5 | 5 - 7 Bedrooms | 3.5 - 5.5 Bathrooms | 4 Car Garage | approx. 3,731 sq. ft.



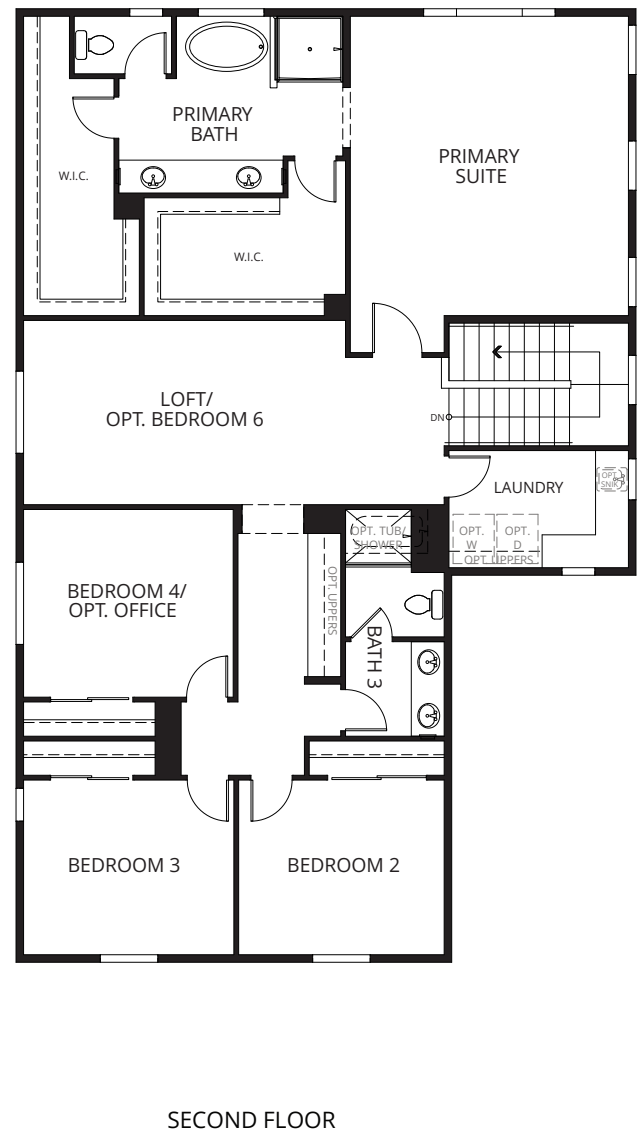
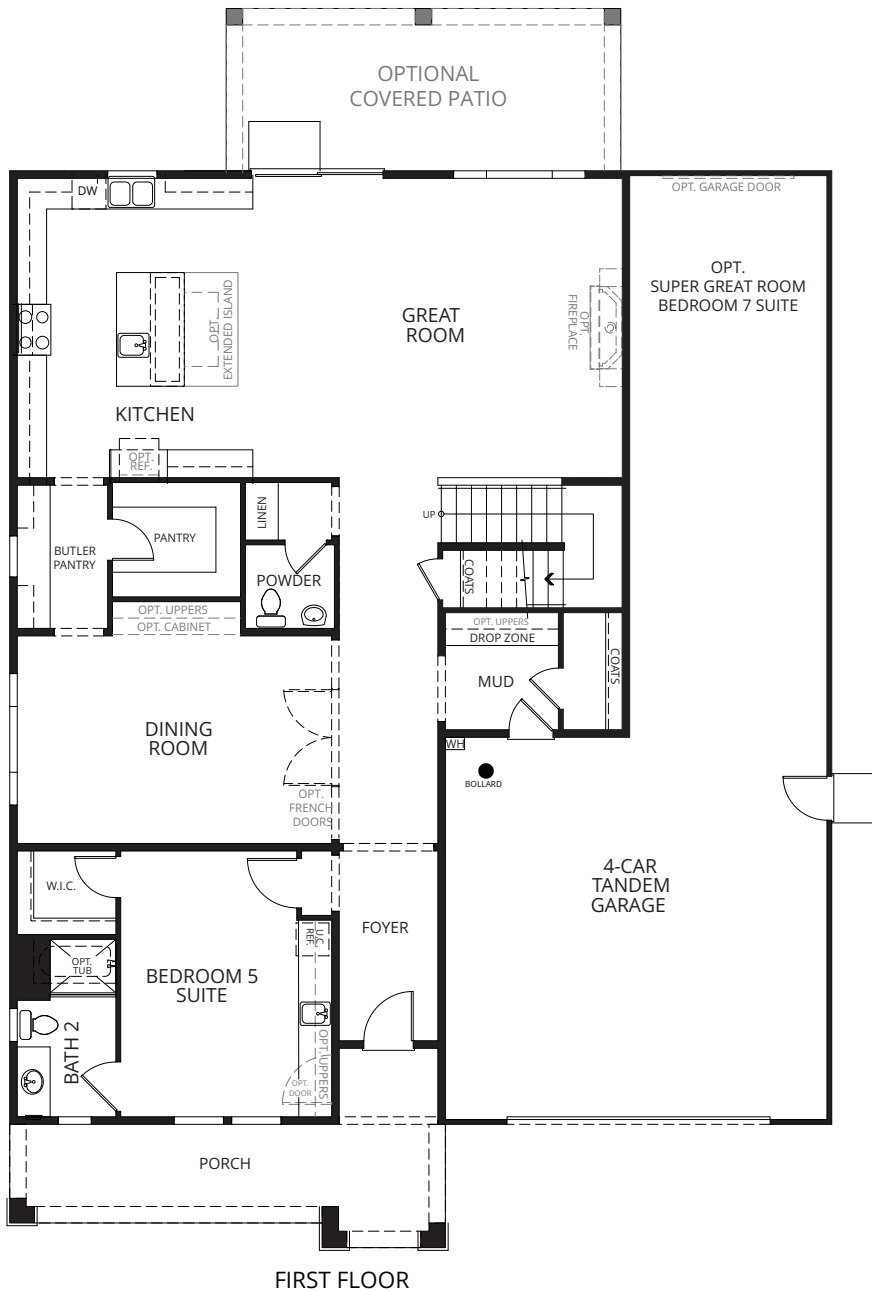
A: Contemporary Prairie



B: California Craftsman

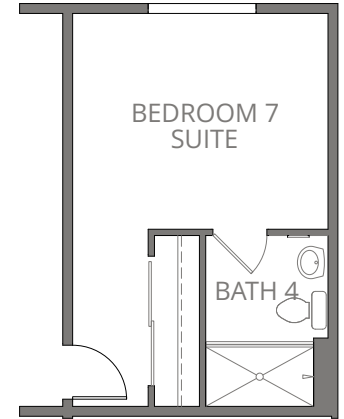


C: Modern Farmhouse

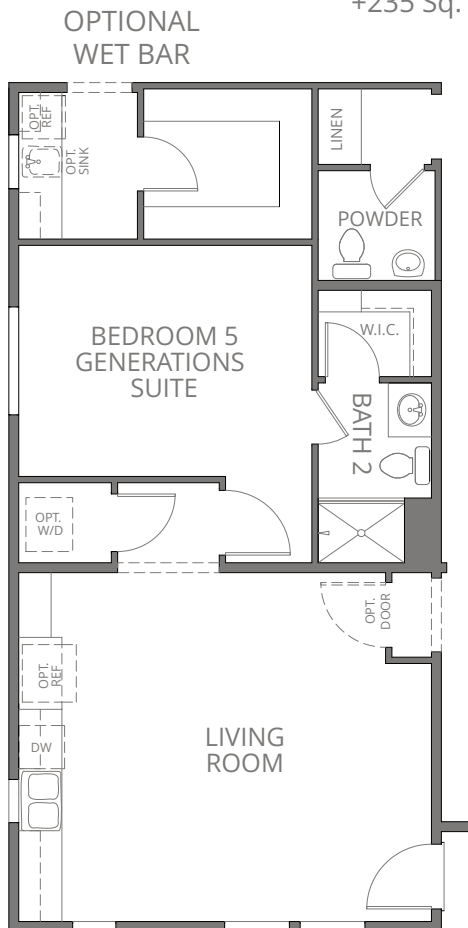




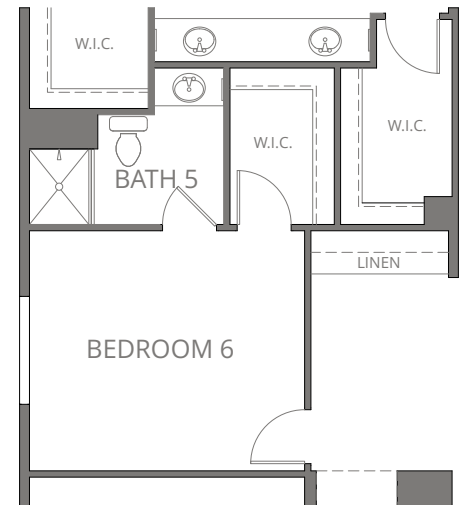
## RESIDENCE 5 Options



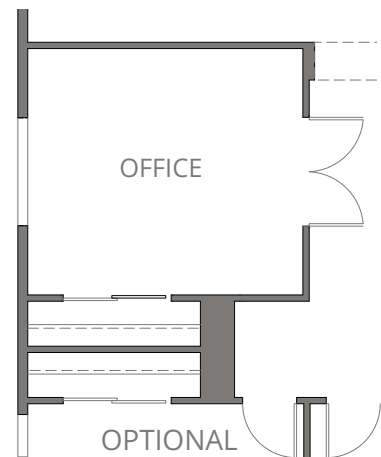
OPTIONAL  
BEDROOM 7 SUITE  
+235 Sq. Ft.



OPTIONAL  
BEDROOM 5  
GENERATIONS SUITE



OPTIONAL  
BEDROOM 6 SUITE



## Standard Features List

### **CERTAINLY CRESLEIGH**

- Engineered roof truss system and steel reinforced foundations
- High quality building materials & workmanship that adds lasting value
- Special measures to reduce water vapor transmission through the concrete slab
- 3 hose bib locations: front, side, and rear of home
- Cresleigh Connected Home – Smart Home Control Module with Smart Device Control & Smart Device Application
- Full side and rear yard fencing with poured service walk
- Separate electrical breaker boxes with interior garage access

### **COMFORTABLE BEDROOMS & LUXURIOUS BATHS**

- Spacious walk-in closet(s) in Primary Suite
- Ceiling light in all bedrooms
- Ceiling Fan pre-wire in Primary Suite
- Bedside USB Charging Stations in Primary Suite
- Stylish engineered stone shower surrounds & vanity tops with 4" backsplash
- Freestanding Soaking Tub in Primary Suite
- Oversized shower with engineered stone surround & glass enclosure in Primary Suite
- Auto-humidistat and vented exhaust fan in Primary Suite
- Dual vanity oval undermount sinks in full bathrooms (per plan)
- Stylish chrome bath accessories & fixtures in all bathrooms
- High quality maple cabinetry with concealed hinges

### **GRACIOUS LIVING AREAS**

- Stylish 17" x 17" ceramic tile at Entry, Kitchen/Nook, Bathrooms, & Laundry
- Drop Zone (per plan)
- Abundant Linen Storage
- Graceful, rounded interior wall corners
- Upgraded stylish door casings & baseboards
- Plush wall-to-wall carpeting in living areas
- Pre-wired for ceiling fan in Great Room
- CAT6 pre-wire in Primary Suite, Great Room, and Loft (per plan)

### **CONNECTED SMART HOME**

- Home Automation Hub with smart device control application
- Honeywell Smart Thermostat
- Kwikset® entry door hardware with digital lock in oil rubbed bronze
- Pre-wired for CAT6 wiring in primary bedroom
- Google Nest Hub™ and Google Home Mini™
- Video Doorbell with Wi-Fi remote capabilities
- Ubiquiti® Wi-Fi extender – allowing for maximum WiFi coverage
- Smart Lighting Controls
- Remote Wi-Fi enabled garage door opener
- USB Charging Stations in Primary Suite and Drop Zone (per plan)

### **ENERGY SAVINGS FEATURES & INVESTMENT PROTECTION**

- Solar Energy Package with Owned Solar Panels
- Energy efficient LED recessed ceiling lights throughout
- 220 volt dedicated outlet pre-wire in garage
- Smart Programmable Thermostat
- Premium low VOC acrylic paint
- Drought tolerant landscaping with Wi-Fi programmable irrigation control and rain sensor
- Gas & Electric dryer hookups in Laundry Room
- Energy saving dual zone control (for 2-story plans)
- Tankless water heater
- High Performace Attics & R-19 insulation in exterior walls
- Energy efficient LED recessed ceiling can lights with dimmers in select rooms
- Long lasting concrete tile roofs
- Heavy-duty foam core insulated garage doors
- Smoke & Carbon Monoxide detectors
- Fire sprinkler system
- 10-Year Structural Warranty

### **GOURMET KITCHENS**

- Center work island including eat-in bar
- Walk-In Pantry with abundant storage (per plan)
- Stainless Steel Frigidaire® appliances
- Your choice of designer selected Quartz or Granite Countertops with 6" backsplash
- Stainless Steel under mount kitchen sink with pull-out kitchen faucet with sprayer
- High quality maple cabinetry with concealed hinges