

THE CEDAR

3 Bedrooms | 2 Bathrooms | 2 Car Garage | approx. 1,542 sq. ft.



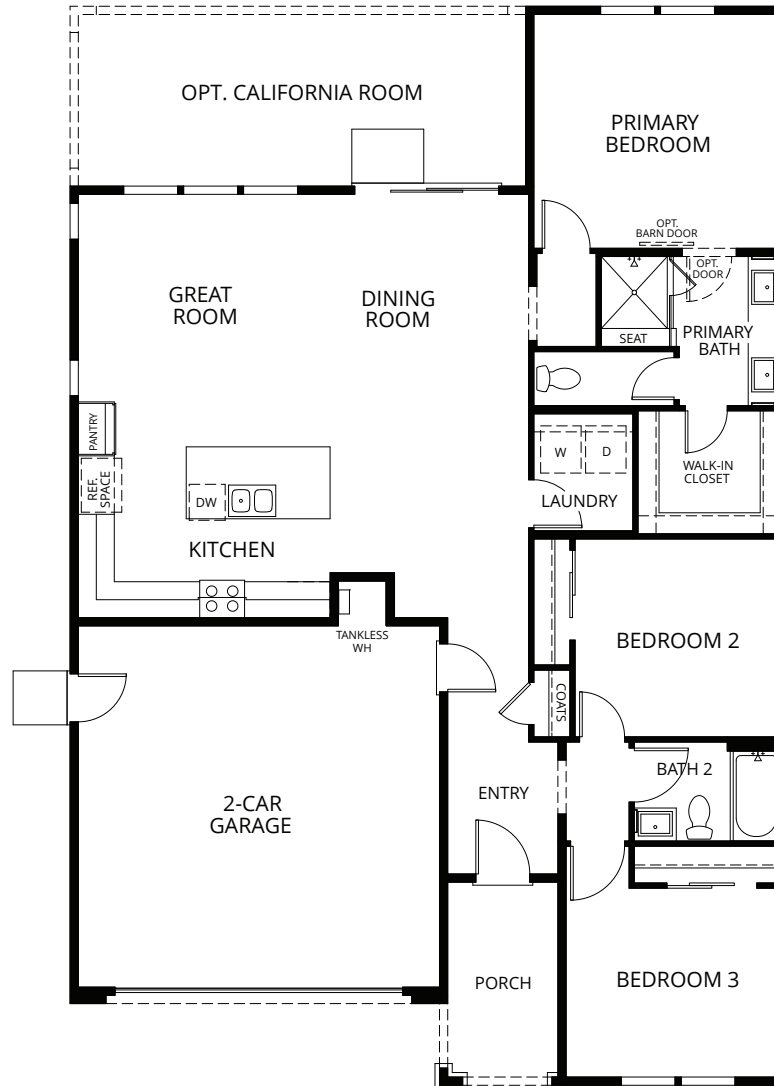
Elevation B



Elevation C



Elevation D



THE JUNIPER

3 Bedrooms | 2 Bathrooms | 2 Car Garage | approx. 1,740 sq. ft.



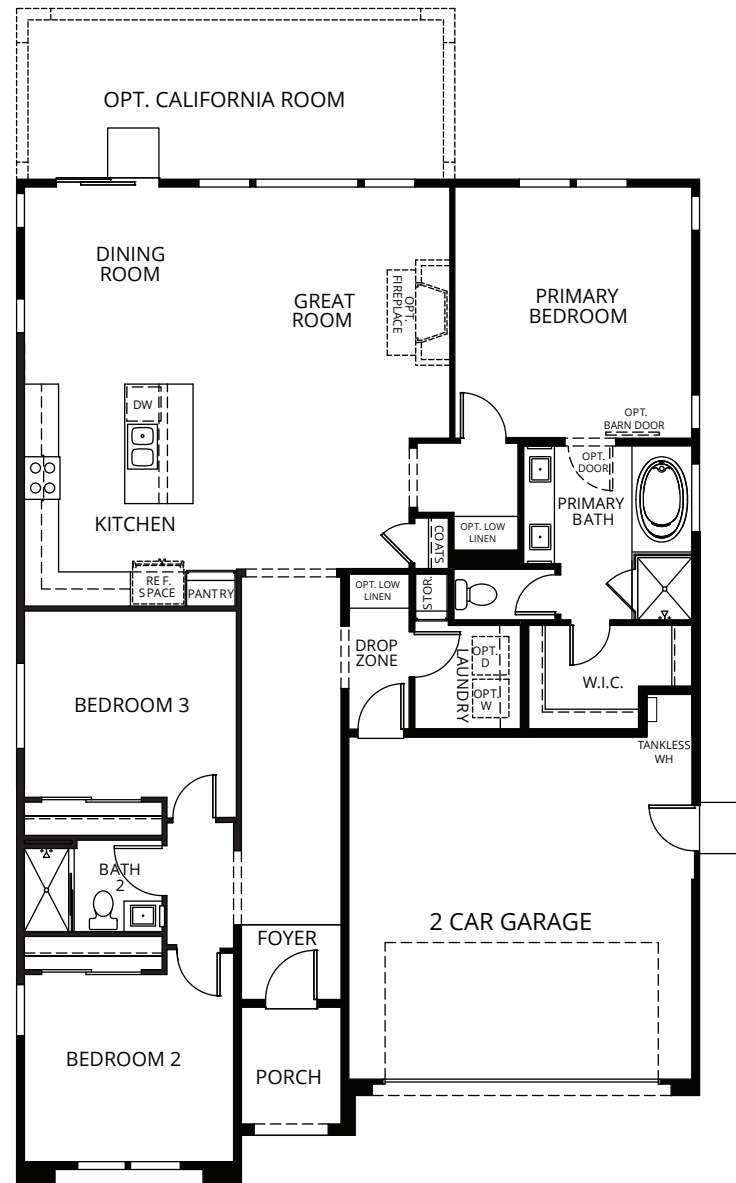
Elevation B



Elevation C



Elevation D



THE ALDER

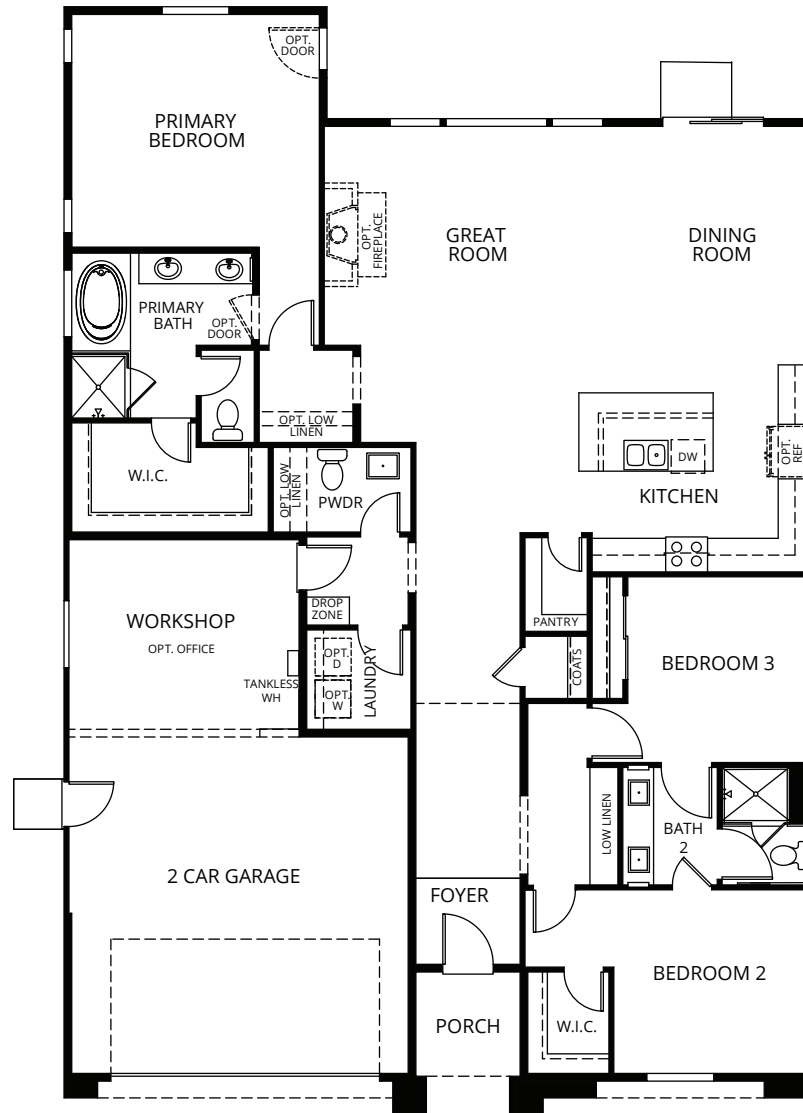
3 Bedrooms | 2.5 Bathrooms | 2 Car Garage | approx. 2,056 sq. ft.



Elevation A



Elevation B



THE WILLOW

4 Bedrooms | 3 Bathrooms | 2 Car Garage | approx. 2,126 sq. ft.



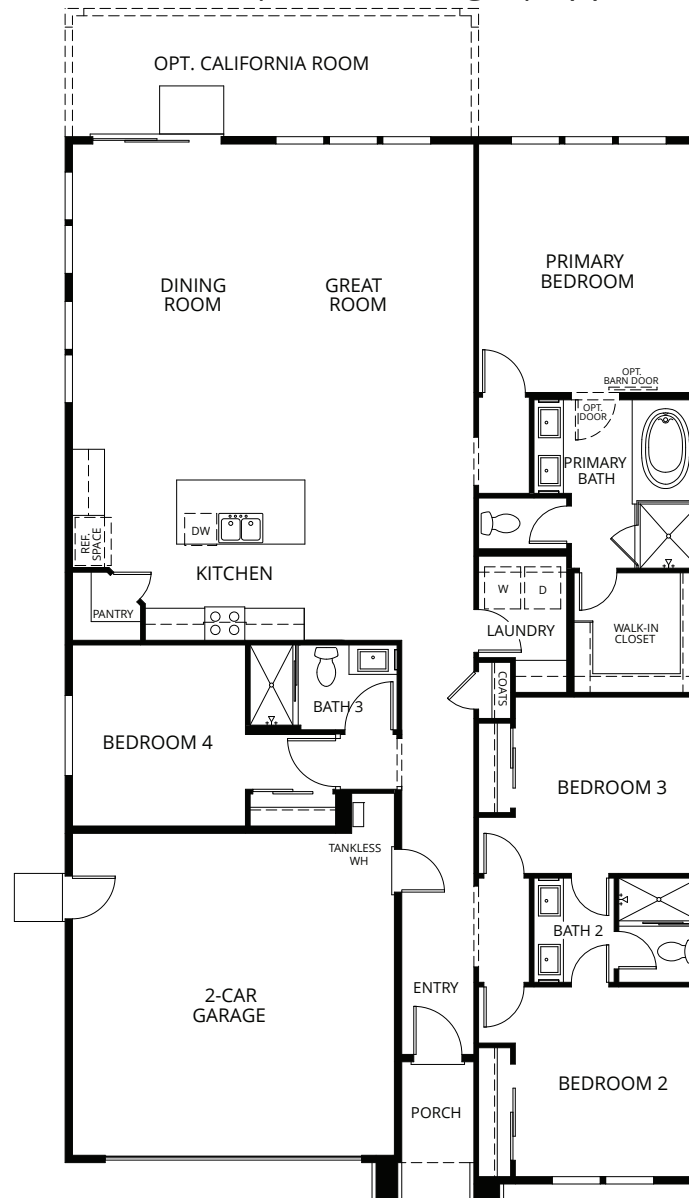
Elevation B



Elevation C



Elevation D



THE MAPLE

3 - 4 Bedrooms | 3 Bathrooms | 3 Car Garage | approx. 2,372 sq. ft.



Elevation A



Elevation B



THE CYPRESS

4 - 5 Bedrooms | 3 Bathrooms | 2 Car Garage | approx. 2,471 sq. ft.



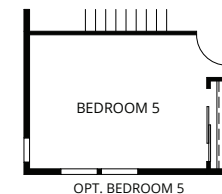
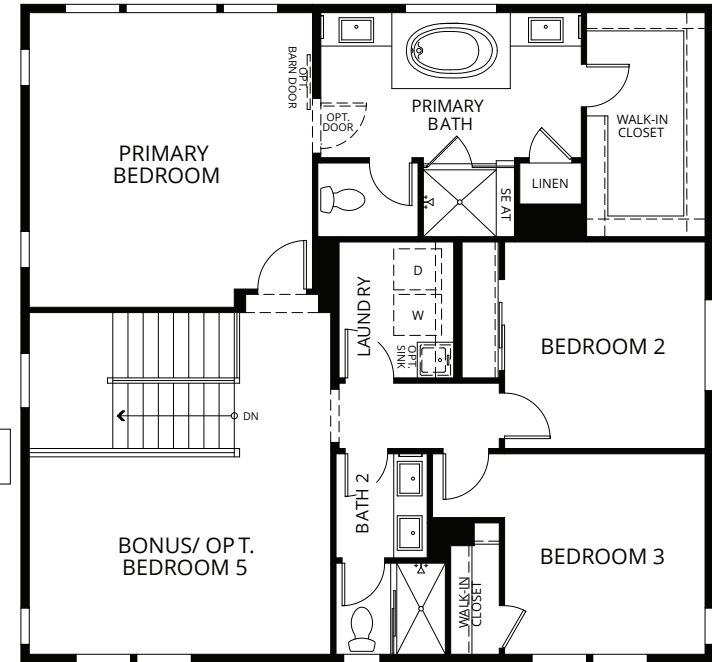
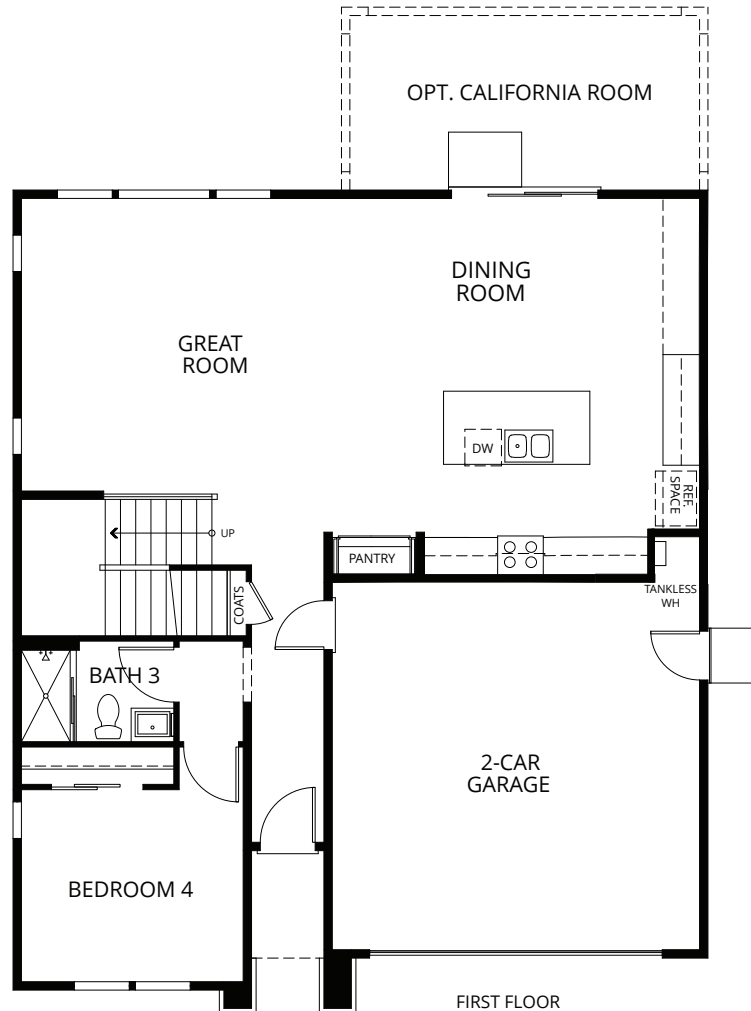
Elevation B



Elevation C



Elevation D



THE ELM

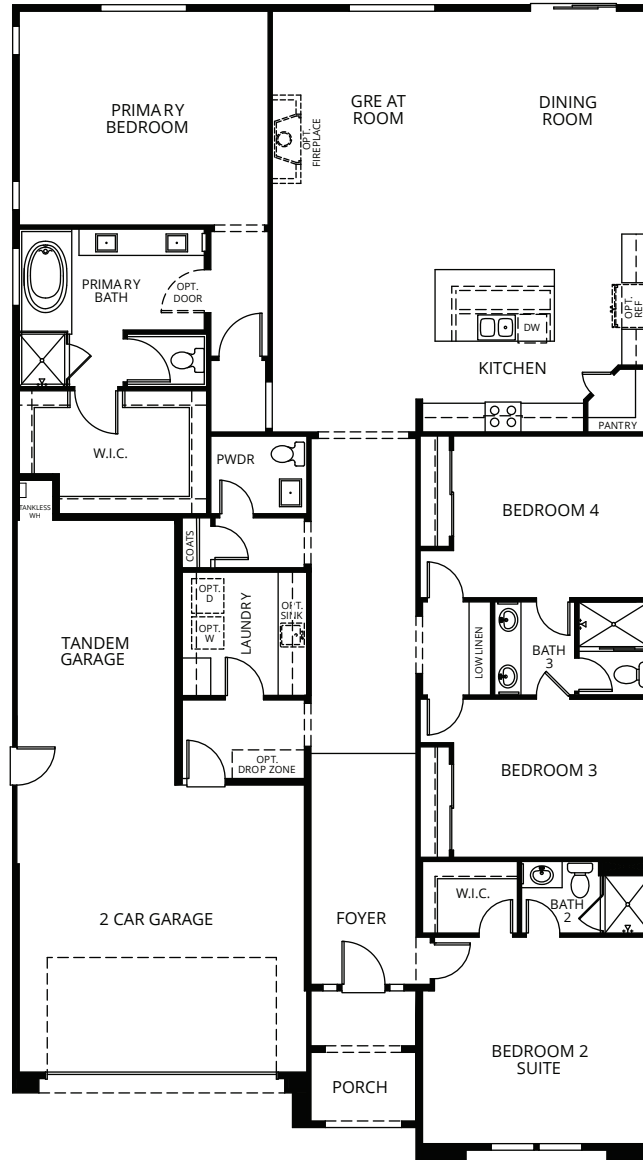
4 Bedrooms | 3.5 Bathrooms | 3 Car Garage | approx. 2,781 sq. ft.



Elevation A



Elevation B



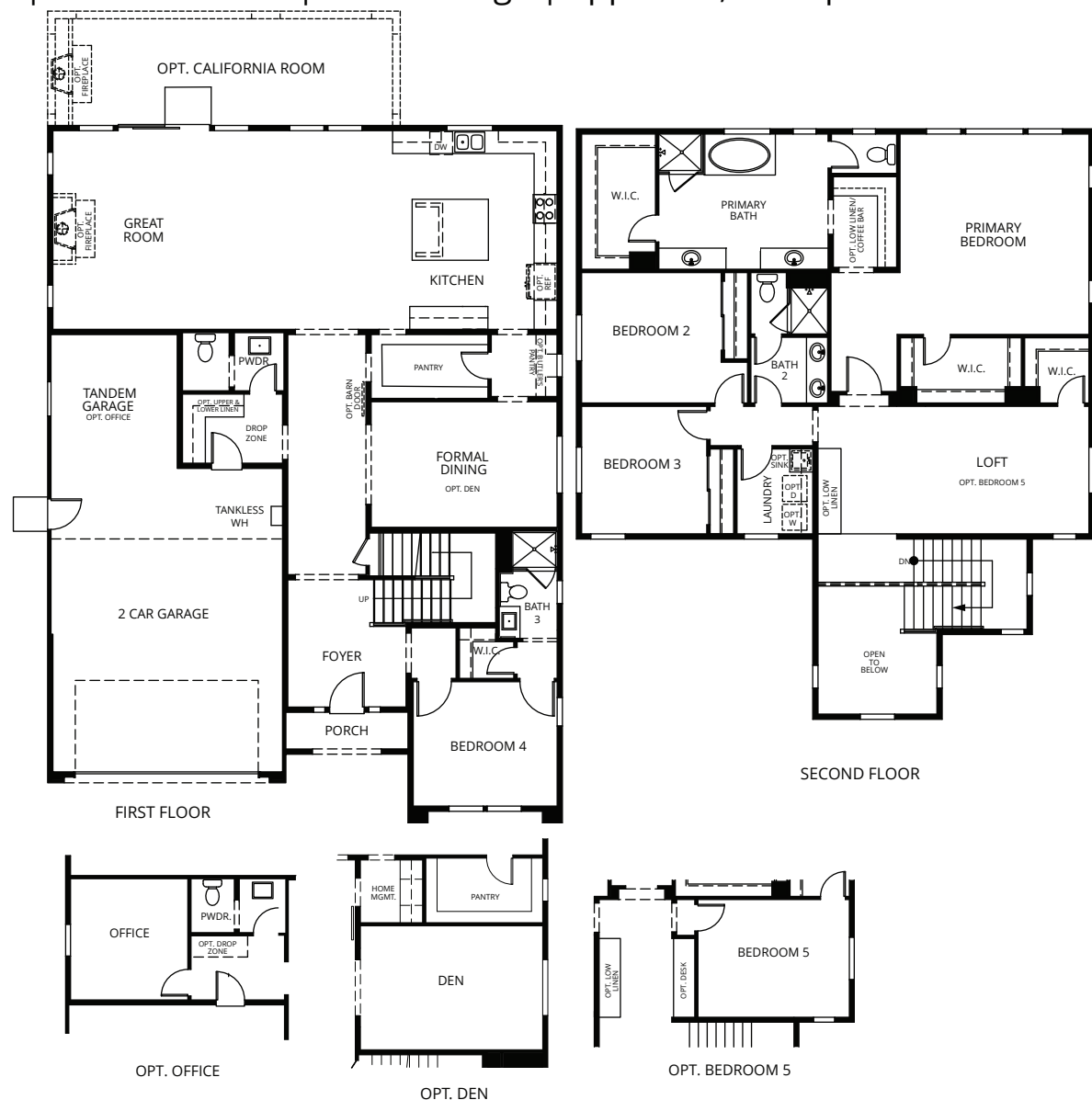
THE SEQUOIA 4 - 5 Bedrooms | 3.5 Bathrooms | 3 Car Garage | approx. 3,497 sq. ft.



Elevation A



Elevation B



Standard Features List

Exteriors

- Designer selected exterior color palettes
- Long lasting concrete tile roofs
- Elegant 8' raised panel entry door
- Kwikset® entry door hardware in oil rubbed bronze
- 8' high garage door with belt drive opener
- Premium NO VOC acrylic paint
- Front yard landscaping with programmable irrigation
- Full side and rear yard fencing

Comfortable Owners' Suites

- Stylish engineered stone vanity tops with 4" backsplash
- Drop-In Soaking Tub (per plan)
- Oversized shower with engineered stone surround & glass enclosure
- Dual vanity oval undermount sinks
- Upgraded chrome bath accessories / fixtures
- High quality maple cabinetry with concealed hinges
- USB Charging Stations in Primary Suite
- Pre-wired for telephone with Category 6 wiring in Primary bedroom

Gourmet Kitchens

- Center work island including eat in bar
- Walk-In Pantry with abundant storage (per plan)
- Designer selected Quartz or Granite Countertops with 6" backsplash
- Stainless Steel under mount kitchen sink
- Designer pull-out kitchen faucet with sprayer
- High quality cabinetry with concealed hinges
- Stainless Steel Frigidaire® appliances

Connected Home Package

- Home Automation Hub with access to smart device application
- Honeywell Smart Thermostat
- Video Doorbell
- Kwikset® digital touch screen deadbolt lock
- Ubiquiti® Wi-Fi extender – allowing for maximum WiFi coverage
- Smart Lighting Controls

Gracious Living Areas

- Elegant 13" x 13" hand set ceramic tile at entry, kitchen/nook, bathrooms, & laundry
- Graceful rounded interior wall corners
- Upgraded stylish door casings & boards
- Energy efficient LED Recessed ceiling can lights throughout
- USB Charging Stations in Primary Suite and Drop Zone/Kitchen (per plan)
- Plush wall-to-wall carpeting in living areas
- Drop Zone
- Ceiling light in all bedrooms
- Pre-wired for ceiling fan in Primary bedroom and great room
- Pre-wired for cable television in Primary bedroom, great room, and loft (per plan)
- Abundant linen storage
- Spacious and elegant showers in secondary bathrooms
- Stylish engineered stone vanity tops with 4" backsplash in secondary bathrooms
- Stylish engineered stone shower surrounds in secondary bathrooms
- Oval undermount sinks in secondary bathrooms
- Laundry Room includes both gas & electric dryer connections

Investment Protection

- Cresleigh Connected Smart Home with control module and smart device application
- Structured Wiring
- High quality building materials & workmanship that adds lasting value
- Electric Vehicle charging pre-plumb in Garage
- Homesite treated for subterranean termite protection
- Special measures to reduce water vapor transmission through the concrete slab
- Heavy-duty foam core insulated garage doors
- Engineered roof truss system and steel reinforced foundations
- Smoke & Carbon Monoxide detectors

Energy Saving Features

- Energy saving dual zone control (for 2-story plans)
- R-19+ insulation throughout home
- Smart Thermostat
- Tankless water heater
- High Performance Attic
- Energy efficient LED recessed ceiling can lights
- Rocker switches throughout, dimmers in select rooms

