

# *Stunning Move-In Ready Home in Cresleigh Riverside at Plumas Ranch!*

\$686,239 | 3 BED | 3 BATH | 2,585 Sq. Ft. | 3 Car Garage

Elegant Single Story  
Living on a  
Peaceful Cul-de-Sac

Upgrades are endless  
in this stunning,  
contemporary,  
**Cresleigh Homes**  
floor plan.

- \$0 Owned Solar
- Quartz counters
- LVP throughout
- Stainless Appliances
- Smart Home package

Lot size: 8,969 sq. ft.



727 Dos Rios Ct, Plumas Lake, 95961  
MLS# 222058981



## **Cresleigh Plumas Ranch**

838 Atherton Way,  
Plumas Lake CA 95961  
(530) 870-4748  
PlumasRanch@Cresleigh.com

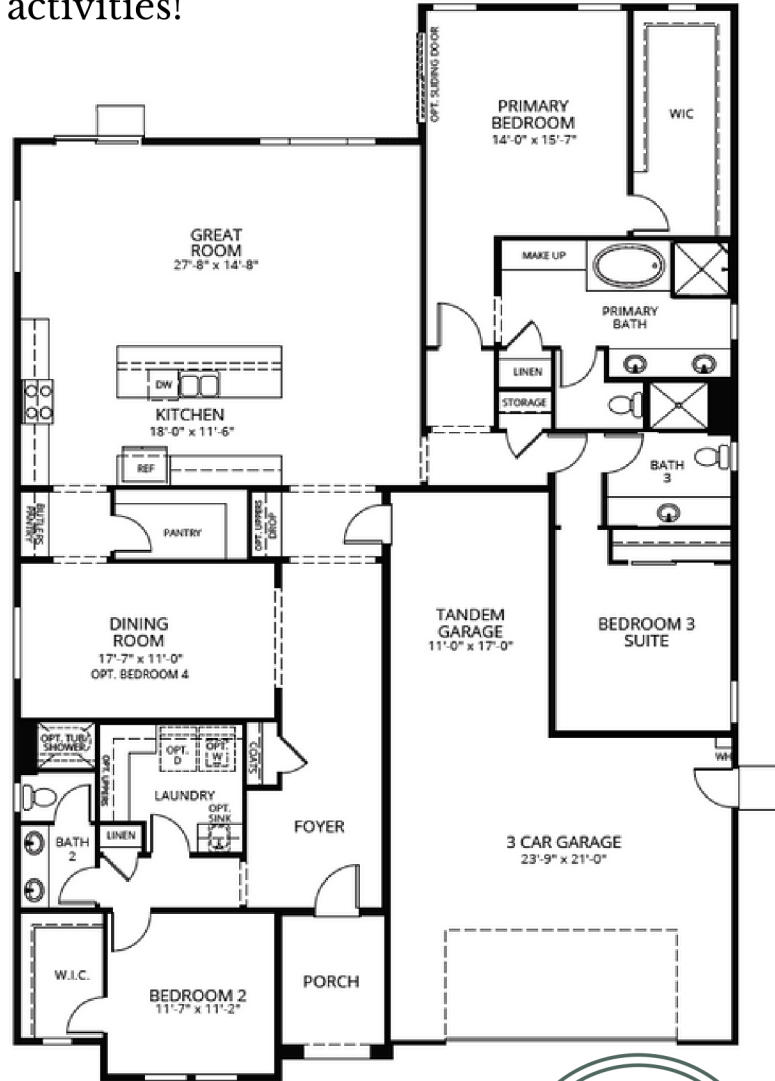
### **Special Financing Available!**

To learn more, please contact our  
sales representatives.  
The Advantage Group DRE #01187063

# Cresleigh

PLUMAS RANCH

Welcome to Cresleigh Riverside at Plumas Ranch! This brand new energy efficient community is perfectly nestled between Sacramento and Yuba City with excellent access to Highway 70. Only a short drive to shopping, dining, and outdoor activities!



**\$25,000+**  
**LENDER**  
**INCENTIVE**  
**AVAILABLE**

**Homesite 70 | 727 Dos Rios Ct**  
**\$686,239 | 2,585 sq. ft.**  
**3 BED | 3 BATH | 3 Car Garage**  
**8,969 sq. ft. cul-de-sac lot**



Copyright 2023. Lender incentive available to when using one of approved lenders. Certain restrictions may apply. Contact Cresleigh Sales Representative to learn more. Plans, specifications, features, square footages, pricing and other elements are subject to change without notice or obligation. All images are artist's conception. Dimensions are estimates based on conceptual architectural plans. Yard sizes vary by lot. Actual field dimensions may vary. The Advantage Group DRE #01187063 Effective October 11, 2023