

Stunning Move-In Ready Home in Cresleigh Riverside at Plumas Ranch!

ORCHARD FRONT | CUL-DE-SAC LOT | LARGE YARD

\$649,000 | 3 BED | 3 BATH | 2,585 Sq. Ft. | 3 Car Garage
727 Dos Rios Ct, Plumas Lake, 95961

Elegant Single Story Living on a Peaceful Cul-de-Sac with Orchard Views

Upgrades are endless in this stunning, contemporary, **Cresleigh Homes** floor plan.

- Fully Owned Solar
- Quartz counters
- LVP throughout
- Stainless Appliances
- Smart Home package

Lot size: 8,969 sq. ft.

MLS# 224086687



Cresleigh Plumas Ranch

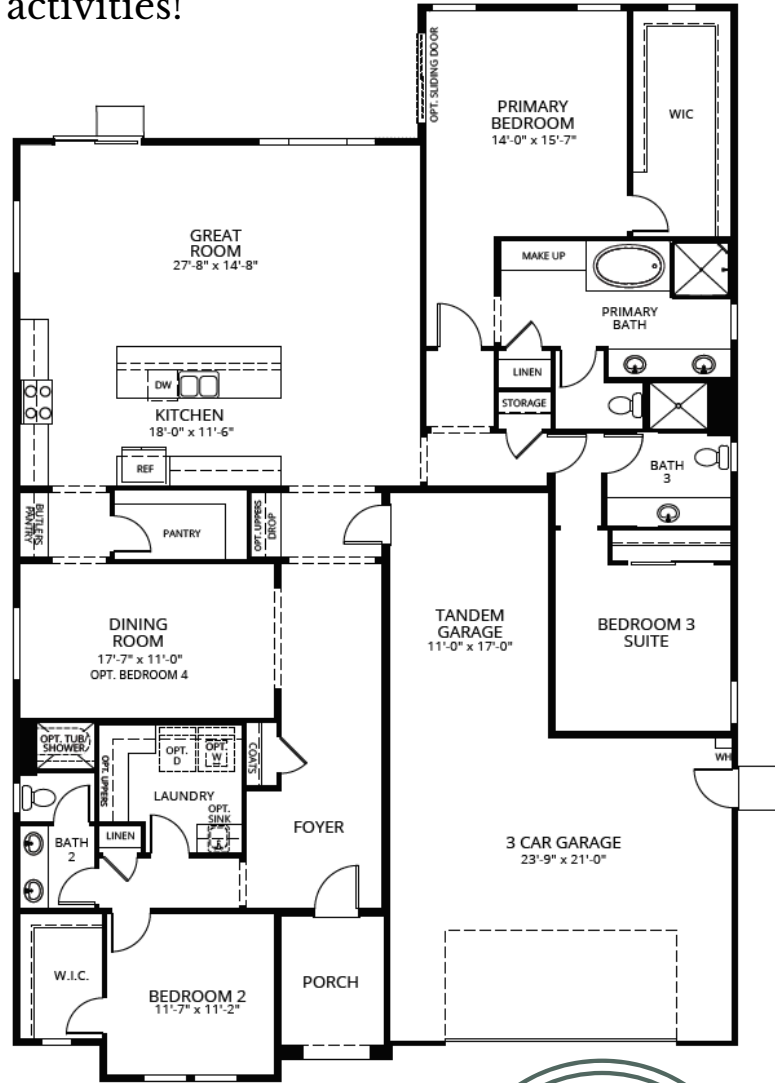
838 Atherton Way,
Plumas Lake CA 95961
(530) 870-4748
PlumasRanch@Cresleigh.com

Special Financing Available!
To learn more, please contact our sales representatives.
The Advantage Group DRE #01187063

Cresleigh

PLUMAS RANCH

Welcome to Cresleigh Riverside at Plumas Ranch! This brand new energy efficient community is perfectly nestled between Sacramento and Yuba City with excellent access to Highway 70. Only a short drive to shopping, dining, and outdoor activities!



**\$25,000+
LENDER
INCENTIVE
AVAILABLE**

**Homesite 70 | 727 Dos Rios Ct
\$649,000 | 2,585 sq. ft.
3 BED | 3 BATH | 3 Car Garage
8,969 sq. ft. cul-de-sac lot**

